



Customs-Railway Cooperation

Turkish Experience





Advance Information



Advance Information

Entry Summary
Declaration (ENS)
→ 2h before arrival



Notification of
Arrival (NoA) →
upon arrival

Previously: ENS and NoA were lodged from the PC rooms located in the customs offices.

As of end of 2017, e-signature is used to lodge ENS and NoA. When the CIM information is recorded in the IT system of Turkish Railways (TCDD) the ENS is simultaneously created and sent to Turkish Customs' IT system.



Simplifications



Legal Basis

Common Transit Convention (CTC)

Article 55(f) : Types of transit simplifications

→the use of the paper-based common transit procedure specific for the goods carried by rail

Article 57(4): Conditions required for applying Authorisation for simplification for the goods carried by rail

National Legislation



Authorization of TCDD

* TCDD is authorized on 26.04.2016



T.C.
GÜMRÜK VE TİCARET BAKANLIĞI
Gümrükler Genel Müdürlüğü

Demiryolu İle Transit Rejimi Taşımalarında Basitleştirme İzin Sahibi

TÜRKİYE CUMHURİYETİ DEVLET DEMİRYOLLARI (TCDD)

Bu belge ile TÜRKİYE CUMHURİYETİ DEVLET DEMİRYOLLARI'na (TCDD) Ortak Transit Sözleşmesi Ek 1 Madde 67 ve Gümrük Kanunu Madde 84/3'e uygun olarak ortak ve ulusal transit rejimlerinde demiryolu ile basitleştirilmiş usulde taşıma yapma yetkisi tanınmıştır.

Sertifika No: 01
Düzenleme Tarihi: 26/04/2016


Mustafa GÜMÜŞ
Gümrükler Genel Müdürü





How it works?

CIM can be used for both National (According to Turkish Customs Code) and International (According to CTC) Transports by rail under the transit procedure.

When CIM is used for simplified transit, CIM replaces the transit declaration



Guarantee Usage in Railway

TRANSIT PROCEDURE



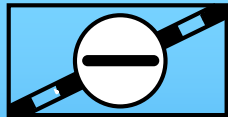
PAPER BASED PROCEDURE (CIM)

- No Guarantee needed for authorizations given before 1 May 2016 (the date Union Customs Code (UCC) entered into force)
- After May 2016 Guarantee needed for all new authorizations

TRANSIT DECLARATION

- Guarantee needed for all transit declarations . The holder of transit procedure has 2 options for the guarantee (CTC Article 10(2) (a),(b):
- Comprehensive Guarantee
 - Individual Guarantee

Key Points for Simplification



Pictogram on wagons
and CIM document

Checking the related
box on CIM for
simplification

TCDD gives access to
Customs for CIM
information and
related accounting
records

Transit Notice



Harmonization of Data

What Customs Needs → What TCDD can provide

The form is a detailed customs declaration, likely for combined transport. It contains numerous fields for data entry, including sections for:

- Transport mode (Lettre de voiture CM, Lettre wagon CUV)
- Origin and destination information
- Weight and volume details
- Classification codes (RID, NIMF)
- Additional remarks and declarations



The interface displays the following fields for data entry:

- Tescil No
- Beyan Sahibi/Temsilci
- Beyan Türü
- Taşıtın Adı/Cin
- Taşıtın Kayıtlı Olduğu Ü
- Taşıyıcı Firma
- Taşıtın Numarası
- Yükleme Ülkesi
- Boşaltma Ülkesi
- Kalem Sayısı
- Ek Belge Sayısı
- Diğer
- Tescil Tarihi
- Onay Tarihi
- Varış
- Toplam Ağırlık (kg)
- Toplam Kap Adec
- Kaynak

At the bottom, there is a table with the following columns:

Taşıma Senedi No	Göndereni	Gönderileni	Grup



First Phase/ Import Process

Bulgaria

Turkey

Kapitan Andreevo

Kapıkule

Halkalı(Istanbul)



When train arrives at Kapıkule Station, TCDD sends Notification of Arrival to Customs IT System, which relates to the entry summary declarations

Customs physically confirms the arrival of the train at Halkalı Station with paper based CIMs. After this, TCDD enters the CIM data to the Customs' IT system to be further used as a basis for customs approved treatment or use.

TCDD receives the train from Bulgarian side and records the CIM Data

TCDD sends the Entry Summary Declaration produced from the CIM data on their IT

Border crossing transactions, Control of the seals, Passport Control etc.

Without lodging a transit declaration by TCDD, train moves to the Halkalı Station with paper based CIMs matching the data on summary declarations



Phase 2 /Import Process

Customs Procedure carried out in the Customs Office of Departure

- The CIM document replaces the Transit Declaration
- TCDD lodges Entry Summary Declaration created simultaneously with CIM Data.
- Notification of arrival also sent by TCDD upon arrival of the train.
- Furthermore, a Transit Notice is sent by TCDD to Customs with a reference to the entry summary declarations, which also contains the wagon no, CIM no, departure date and office of destination.
- Next step is the releasing of the train by customs for the next station (office of destination).
- All above data are submitted using e-signature.



Phase 2 /Import Process

Customs Procedure carried out in the Customs Office of Destinations

- When train arrives at the office of destination, there is no longer need of data submission by TCDD thanks to the Transit Notice already given.
- Customs Office of Destination confirms the arrival of the train and approves the Transit Notice for further customs procedures.



Phase 2 /Export Process

Customs Procedure carried out in the Customs Office of Departure

- The CIM document replaces the Transit Declaration
- TCDD sends Transit notice, including a reference to the Export Declaration number to customs in an electronic environment and a registration number is taken automatically representing this Transit Notice.
- Train is released by customs for the next station.



Phase 2 /Export Process

Customs Procedure carried out in Customs Office of Destination

- Customs Office of Destination confirms the arrival of the train and approves the Transit Notice for Exit Operations
- Exit notification with reference to export declarations sent by TCDD to customs by using e-signature
- The train leaves the territory of Turkey and export declaration is closed automatically upon approval of the exit notification by customs



Monitoring/Post Control



TCDD CIM Bilgileri Sorgulama

- Ana Sayfa
- İhracat Beyanname No.
- Cim/Sipariş No.

Cim Numarası ile Sorgulama

Cim Numarası	<input type="text" value="Cim Numarası Giriniz..."/>
	001602
Cim İstasyonu	<input type="text" value="Cim İstasyonu Giriniz..."/>
	05931-1
Cim Yılı	<input type="text" value="Cim Yılı Giriniz..."/>
	2017
	<input type="button" value="Sorgula"/>

- Turkish Ministry of Customs and Trade has access by web service to CIM information and related accounting records created by TCDD in their electronic environment since about 10 months.
- We made the necessary arrangements for the Local Customs Offices to have access to these information through our website.



Security Measures



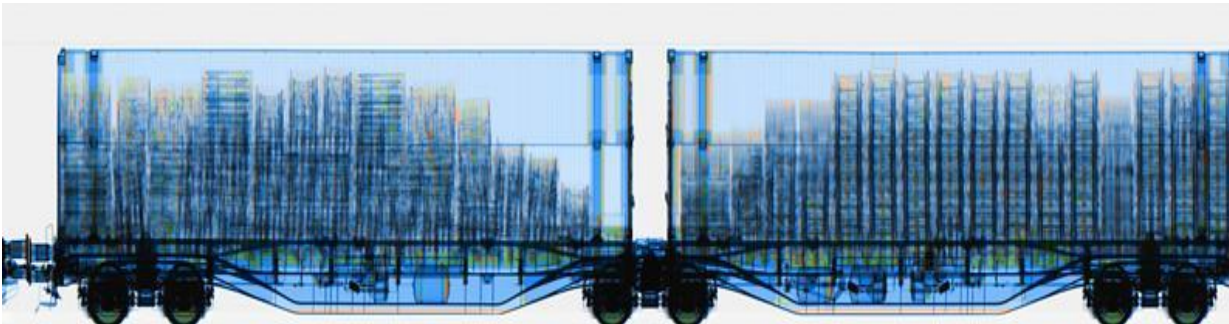
X-RAY



2013 – KAPIKOY
(IRANIAN BORDER)

2017- KAPIKULE
(BULGARIAN BORDER)

2019- CANBAZ
(GEORGIAN BORDER)



THANK YOU FOR YOUR ATTENTION



SERKAN KAYATÜRK
Customs and Trade Expert
Turkish Ministry of Customs and Trade
DG of Customs
e-mail: S.kayaturk@gtb.gov.tr