

HM Revenue & Customs/UK Border Agency

The UK Approach to Integrated Border Management

June 2009

Doug Tweddle - Director Customs & International, HMRC
Kevin Franklin - Director Border Transformation Group, UKBA

The Changing Environment

- Continued globalisation of International Trade
- Increased freight volumes and passenger numbers
- Demands of immigration and migration
- Pressure to facilitate international trade
- Pressure to tighten border security
- Pressure to reduce costs to the legitimate trade
- Increased harmonisation across the European Union
- Downward pressure on resources



Creating the UK Border Agency

- Cabinet Office Review 'Security in a Global Hub'
- Reform of the UK's Border arrangements
- Integrating the work of frontline customs and immigration staff and UK visas staff overseas
- Establishing a unified Border Force
- Protection against terrorism and crime
- Facilitating the flow of legitimate travel and trade



UK Border Agency – Purpose

*Secure our borders and control migration
for the benefit of our country*



Our Strategic Objectives

- Protect our border and our national interests
- Tackle border and tax fraud, smuggling and immigration crime
- Implement fast and fair decisions

UK Border Agency – Scope

25,000 staff in 135 countries worldwide
9,000 Border Force staff

Manage:

200 million border crossings

2.5 million visa applications

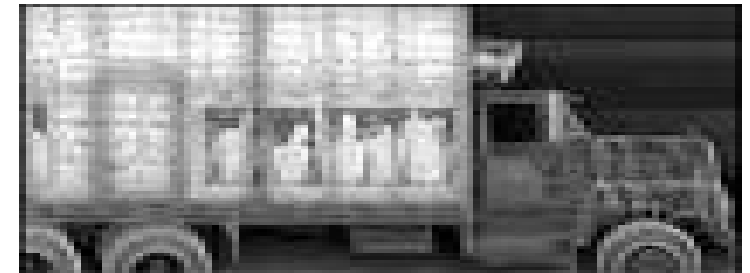
25,000 asylum applications

60,000 removals/deportations of people

£700 billion of goods

16 regions - 11 in the UK and 5 overseas

A budget of £2 billion+



UK Border Agency – One Year On

- New operating model 3500+ staff trained; PCP rolled out Dec 08
- Automated Clearance System trials (Manchester, Stansted)
- Single uniform for frontline staff introduced from April 09
- Improved signage at 40+ locations
- Borders, Citizenship and Immigration Bill – January 09
- MOU with Police April 08 + active enhancement
- Service Level Agreements at 50+ locations



UK Border Agency – Next Steps

Legislation

- Royal Assent planned July 09
- Formal staff transfer August 09; Day 1 will launch new arrangements

Operational Integration

- 11 sites testing secondary activity
- Looking to exploit more flexible deployment opportunities

Model Ports

- Developing 2 ‘ports of the future’
- Will test operating model; technology; targeting/selection



HM Revenue & Customs as the UK Customs Authority

HMRC is the UK Customs authority, accountable for

- Collection/enforcement of taxes (import VAT, excise/customs duties)
- Regulation, control and facilitation of international trade
- Customs policy, procedures, systems and legislation
- Administration of European Union Customs controls
- Combating Intellectual Property Rights Fraud
- Strategic Export Licensing controls
- Collection of £460 billion in Direct and Indirect taxes

HMRC

International Trade



- Collects £22 billion in import duties and taxes
- Handle 30 million on-line import, export and transit transactions
- Process goods declarations to a value of £700 billion
- Deals with 143,000 UK international traders

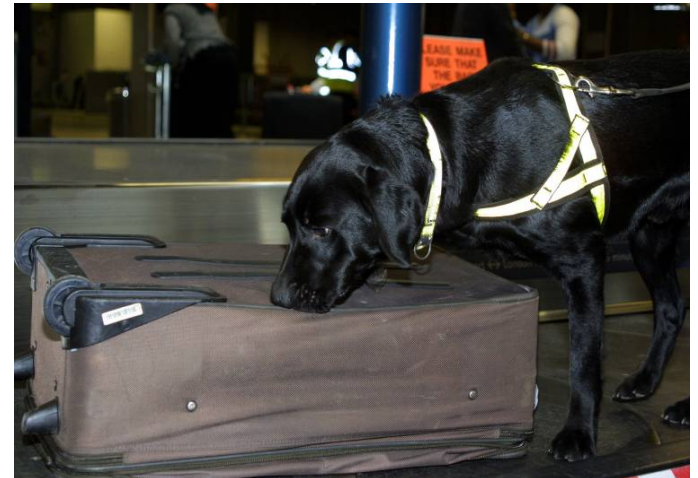
Responsibilities at the Border

HMRC

- Import and export cargo declarations and licensing
- Inland fiscal controls
- Control and regulation of legitimate trade
- Collecting and securing import taxes

UKBA

- Immigration/migration/visa controls
- Physical examination of goods
- Anti smuggling controls
- Major delivery partner for HMRC



HMRC & UKBA Working Together - Strategic Planning

- UKBA Board with HMRC representation
- HMRC Director General/UKBA Chief Executive monthly meeting
- Partnership Committee
- Partnership Agreement with specific delivery objectives
- Joint Policy Forum

HMRC & UKBA Working Together - Operational Delivery

- Tasking & Coordination Group
- Intelligence sharing
- UKBA feedback from physical examinations at the border
- Shared services – for example, operations centre, intelligence analysts, storing seized goods, criminal investigation follow-up
- Enhanced co-operation with the Police

A New UK Blueprint for International Trade and Border Management

An integrated business model that aligns revenue, customs and border management with security, compliance and customer service:

- Exporting the Border - upstream risk management and migration controls; advance passenger and cargo information
- Harmonised, simplified and integrated procedures - Single Window, Single European Access Point, Common Risk Management, Centralised Clearance
- Seamless data pipelines - feeding the processes between trade and government
- Strong Partnerships - C2C; C2B; cross border approach with international colleagues; working with industry

A more efficient and secure international trade supply chain

Summary

- Integration of frontline Border Force activities
- Sharing of Intelligence and risk assessments
- Partnership Agreement with clearly specified roles, targets and accountabilities
- Integration to maximise efficiency and effectiveness
- Increased flexibility and geographical scope

Thank you