



WORLD CUSTOMS ORGANIZATION
ORGANISATION MONDIALE DES DOUANES

Partnership with Donors

October 2008

Takashi Matsumoto
Head
WCO Regional Office for Capacity Building

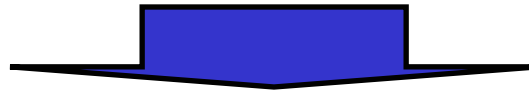


Items

- **WCO CB Strategy and ROCB**
- **Outline of the ROCB AP**
- **Partnership Donors**
 - **Cases of Asia Pacific**

WCO CB Strategy and ROCB

June 2003: WCO CB Strategy and Regionalization of CB



April 2004: AP decided establishment of ROCB in Thailand



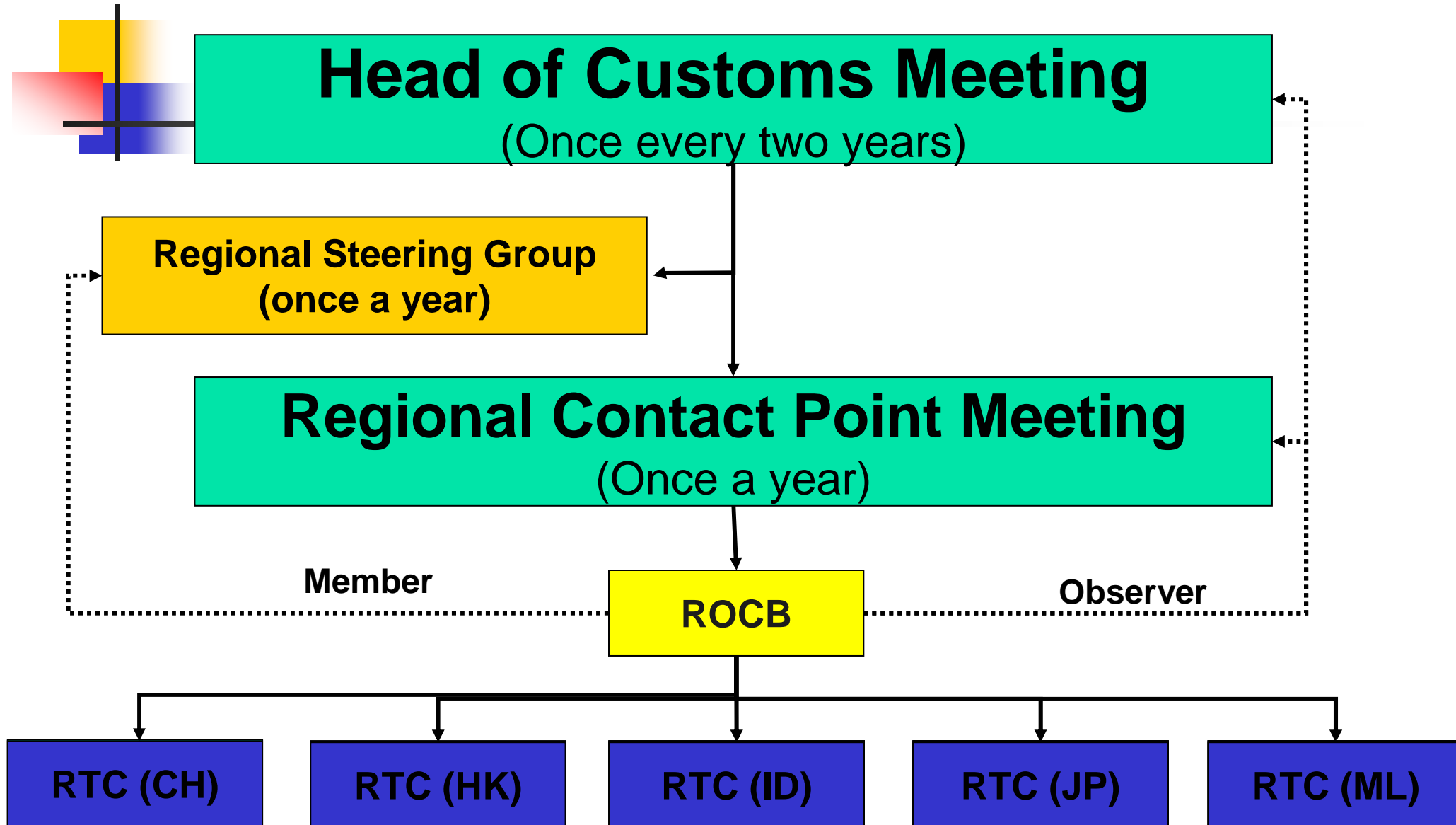
June 2004: AP decision was approved by the Council



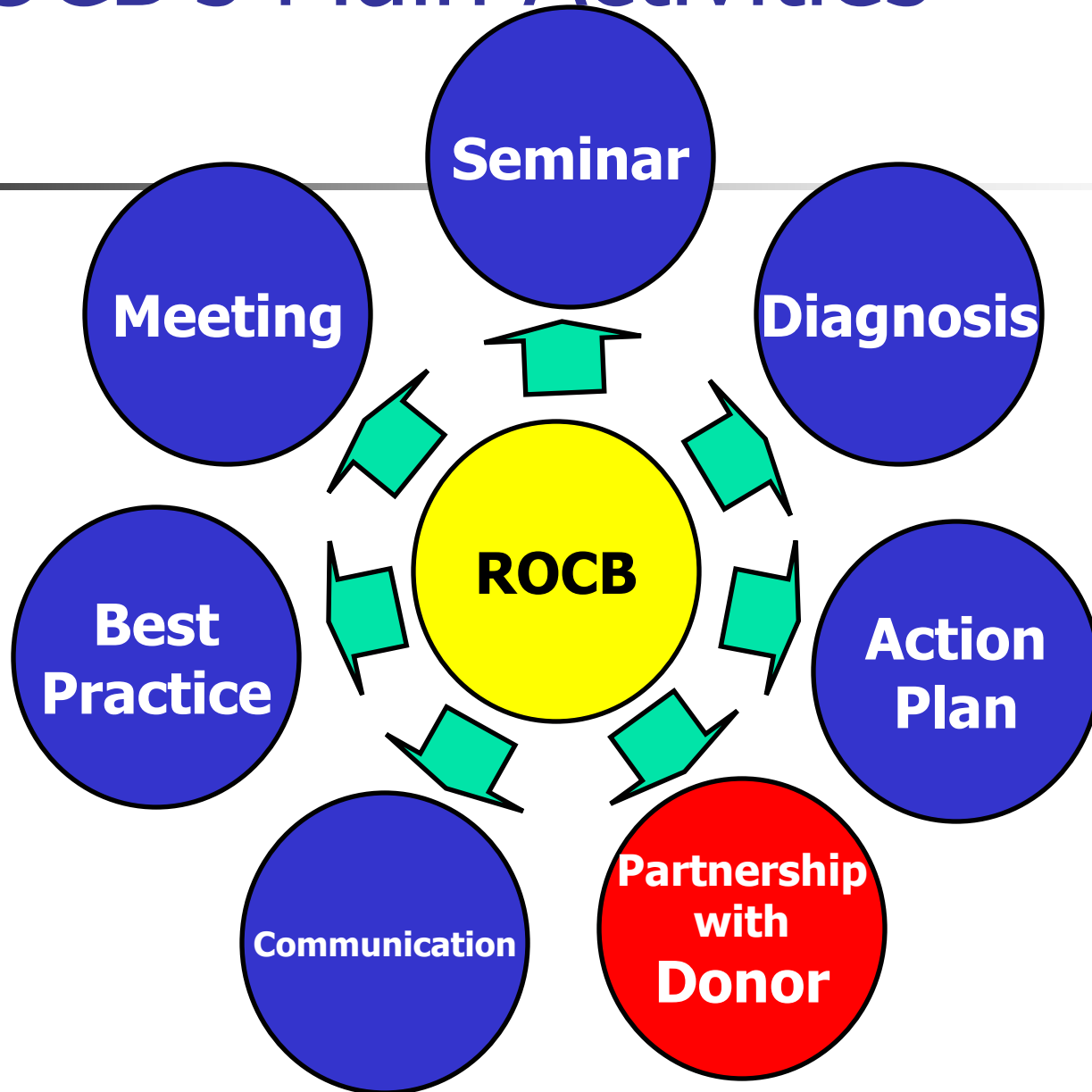
September 2004: Thai Government approve the ROCB



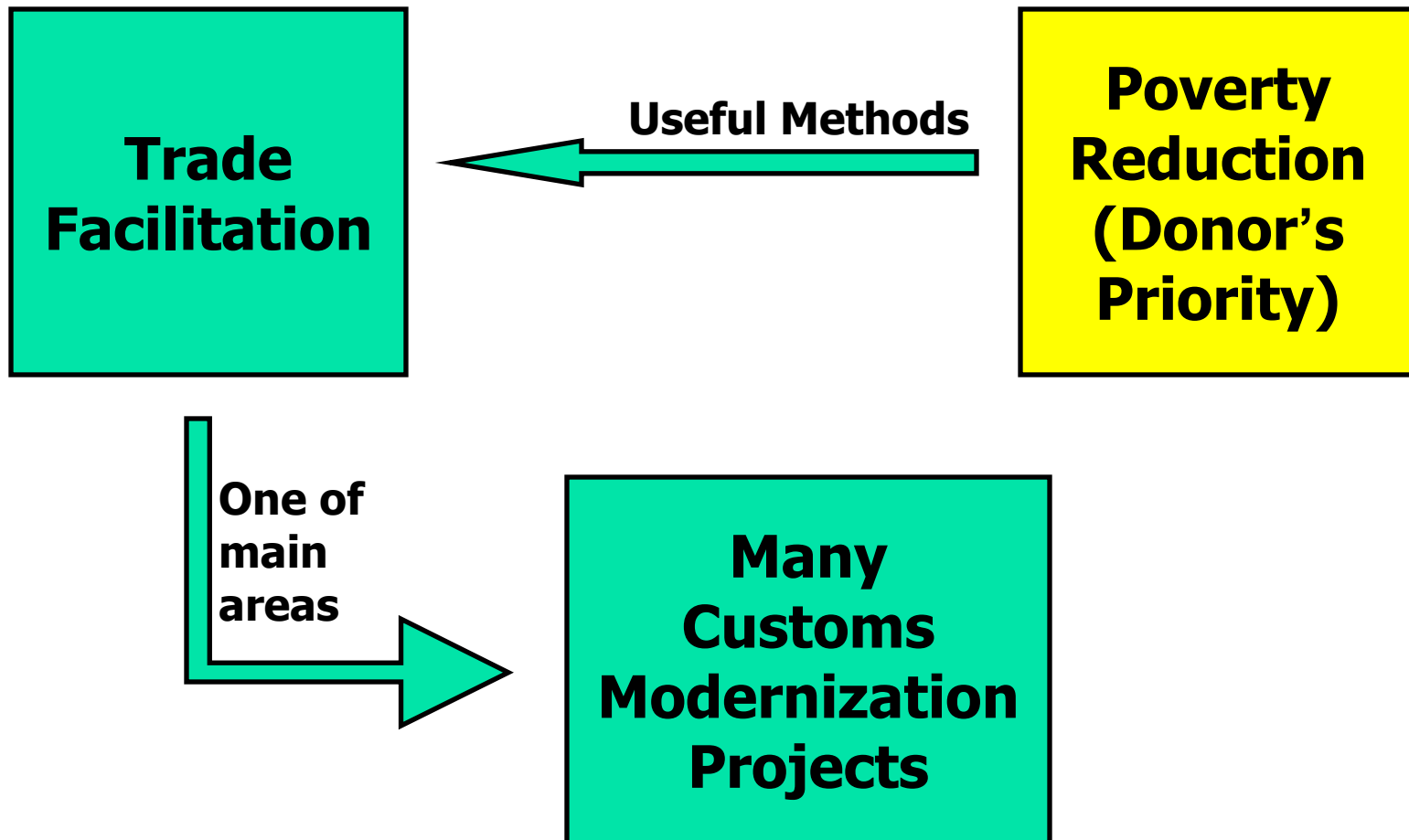
Regional Structure and ROCB



ROCB's Main Activities



Partnership with Donors

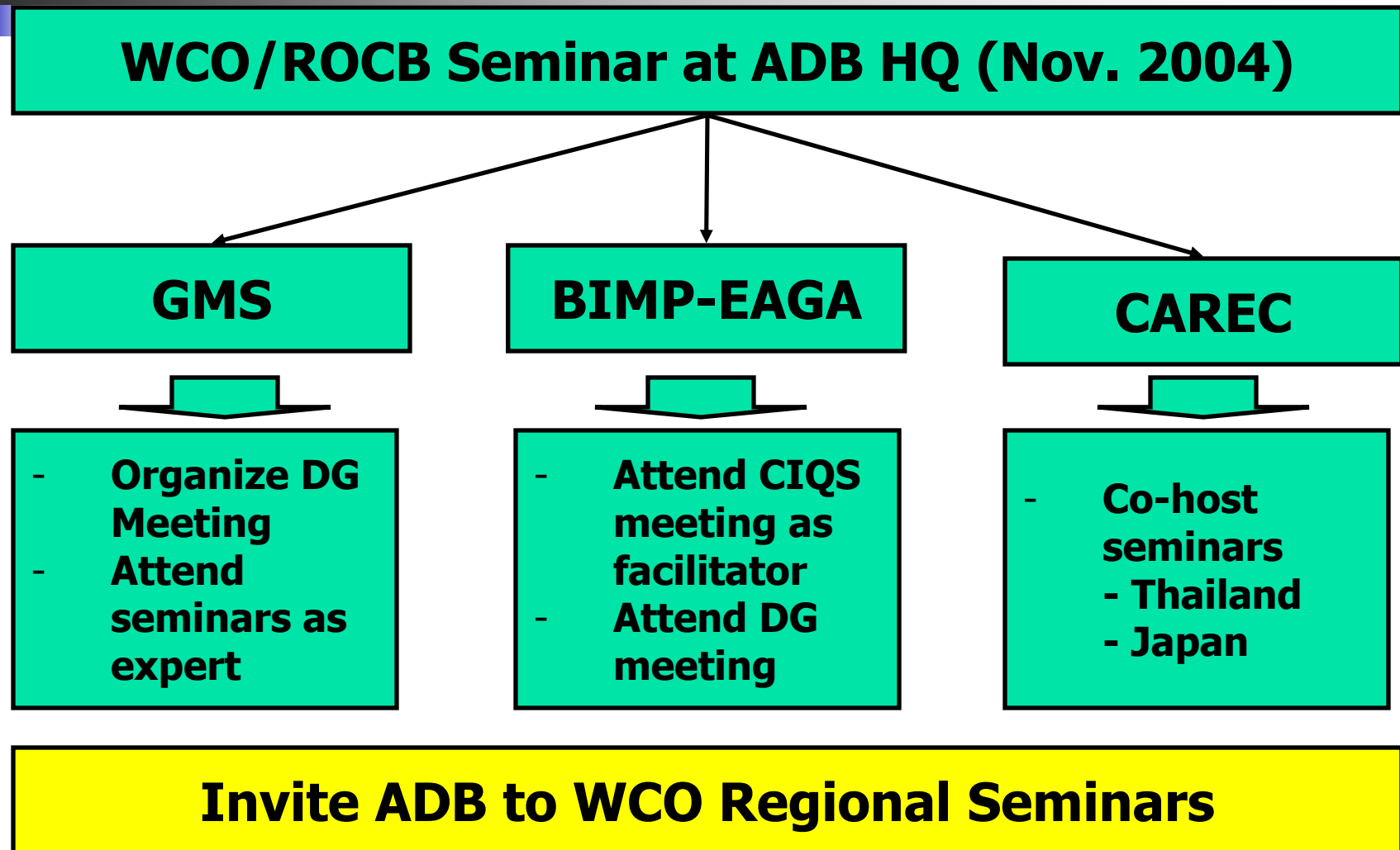




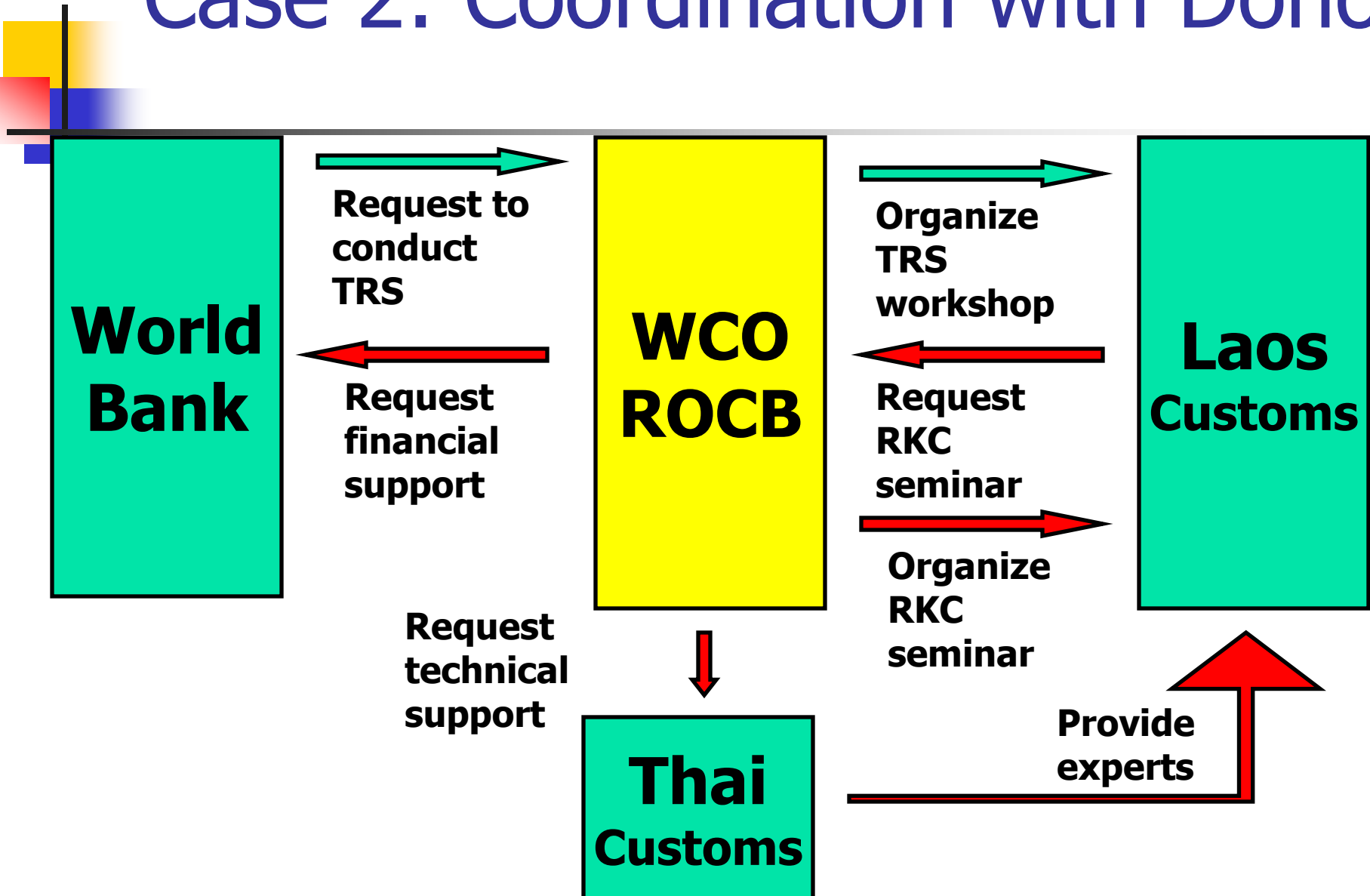
Partnership with donors

- World Bank
- Asian Development Bank
- UNEP, UNESCAP, UNDP, UNODC
- JICA, USAID, AusAID, Commonwealth Secretariat, EC, EU countries
- JETRO, US Chamber of Commerce etc.

Case I: Join with Donor's Activity



Case 2: Coordination with Donor



Case 3: National Donor Meeting

**WCO Conducted SAFE FOS Diagnosis
(February 2006)**

**ROCB organized Action Plan Workshop
(May & September 2007)**

**Cambodia Customs developed AP
(December 2007)**

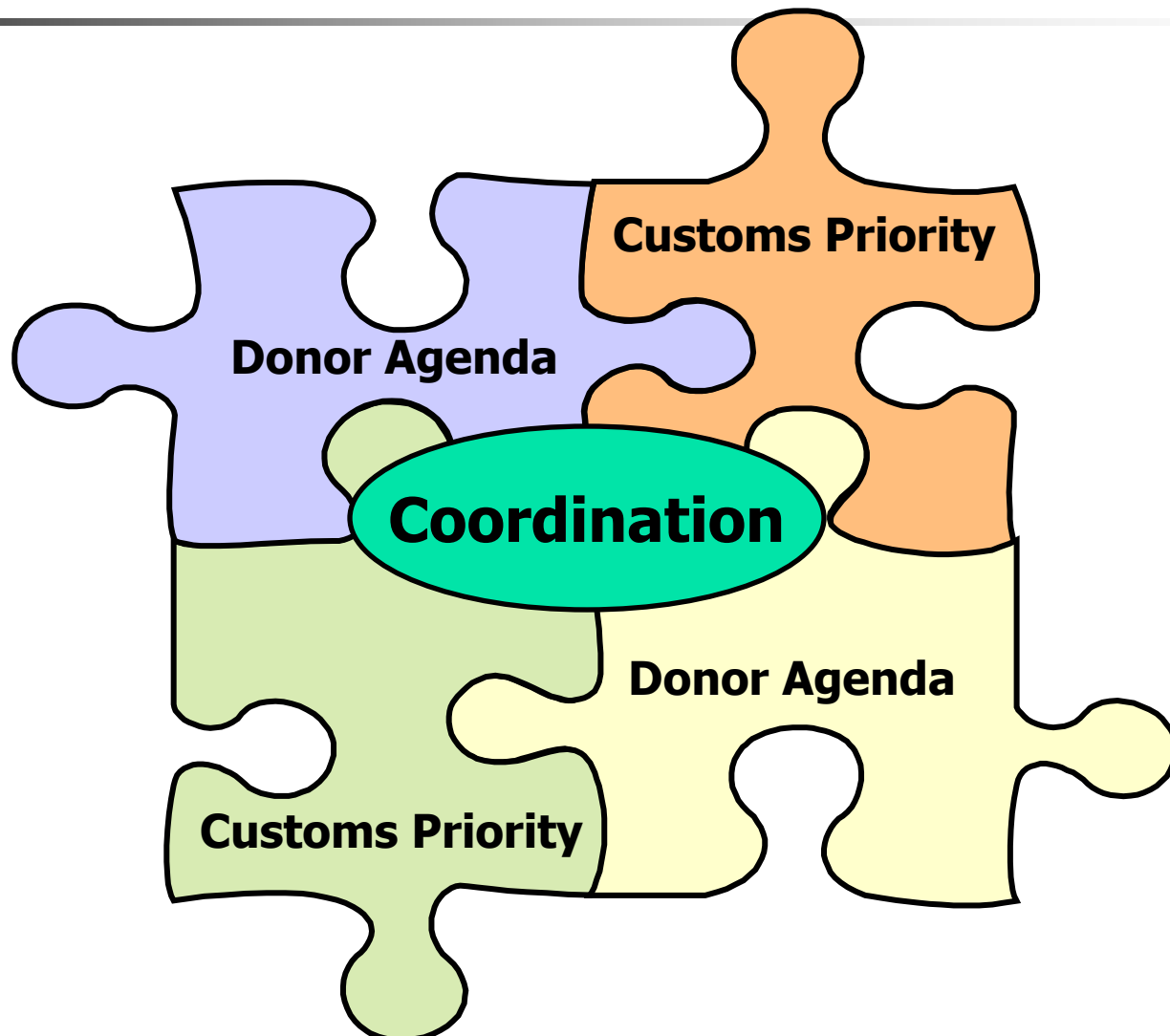
**ROCB organized National Donor Meeting
(February 2008)**



Case 4: Communication & Information sharing

- **Develop Regional Best Practice**
 - Customs Training Center (March 2006)
 - Time Release Study (October 2007)
 - AEO (Australia, China, Japan, Korea, and New Zealand cases) (April to August 2008)
- **Introduction of WCO tools**
 - UNESCAP: Trade Facilitation Meeting (TRS, RKC, RM)
 - UNEP: Green Customs Seminar (RM, HS)

Role of WCO & ROCB





Thank you

matsumoto@rocbap.org