



Canada Border
Services Agency

Agence des services
frontaliers du Canada

CBSA: Approach to Document Examination and Fraud Detection

World Customs Technology and Innovation Forum

Brussels, Belgium

6th November, 2009



Canada 


About the Canada Border Services Agency



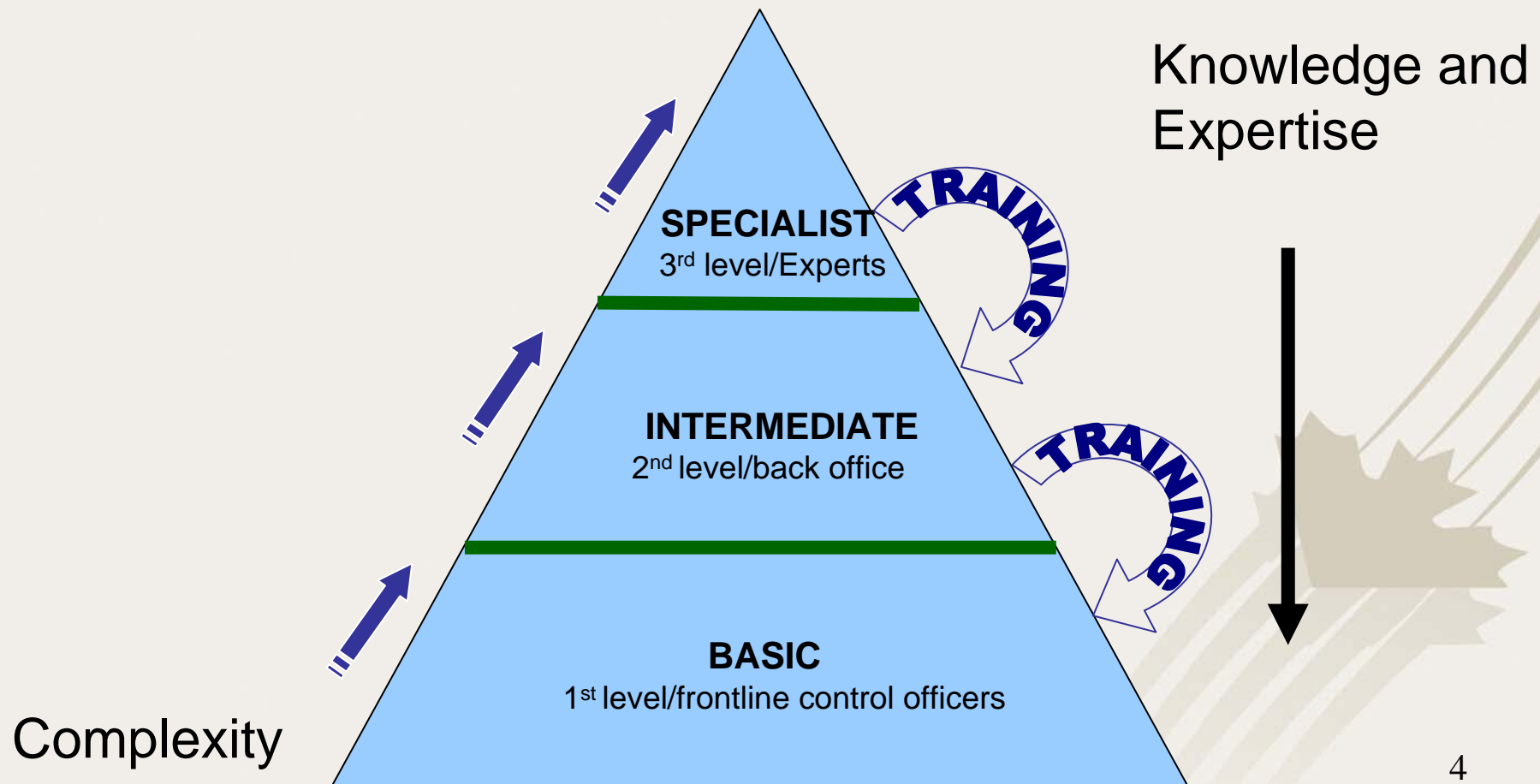
- Established in December 2003
- The CBSA reports directly to the Minister of Public Safety Canada
- Integrates functions previously divided among three organizations
 - Customs Program
 - Immigration Enforcement and Intelligence
 - Border related food inspection
- Dual mandate:
 - Support national security and public safety priorities
 - Facilitate the free flow of persons and goods that meet all requirements under the program legislation.
- Workforce of over 14,000 employees

CBSA's Approach to Document Examination and Fraud Detection



- Development of a national training curriculum and standards to:
 - Develop skills in fraud detection when examining documents pertaining to people or goods entering to Canada.
 - Development of a hierarchy of expertise within the agency
- 

A Hierarchy of Fraud Expertise



Training Programs Level I



- Target Audience:
 - Operations staff who examine documents as part of their duties.
- Level I: Introduction to Document Examination (7.5 HRS)
 - Document examination terminology
 - Trends
 - Basic tools
 - Identification of basic security features and print techniques.
 - Basic facial comparison techniques



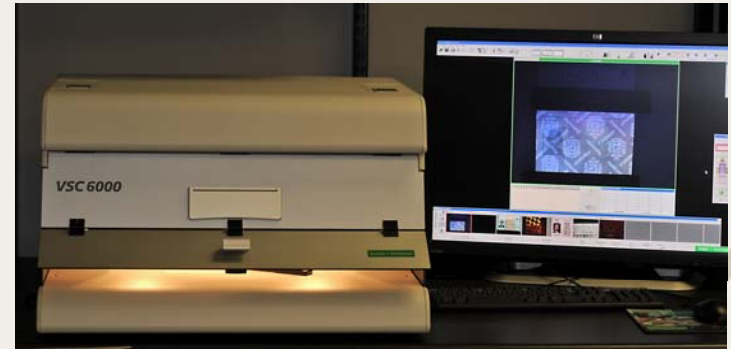
Training Programs Level II

- Target Audience: Experienced operational staff with basic document knowledge. Able to provide first line of assistance to front line staff. Pre-requisite for delivery of Level 1 basic document examination training.
- Level II: Basic document examination course (37.5HRS)
 - Systematic and consistent methodology
 - Document manufacture and printing processes
 - Advanced security features
 - Canadian documents in depth
 - Facial comparison more in depth
 - Simulating security features
 - Practical exercises
 - Standardized knowledge and practical tests with minimum pass mark



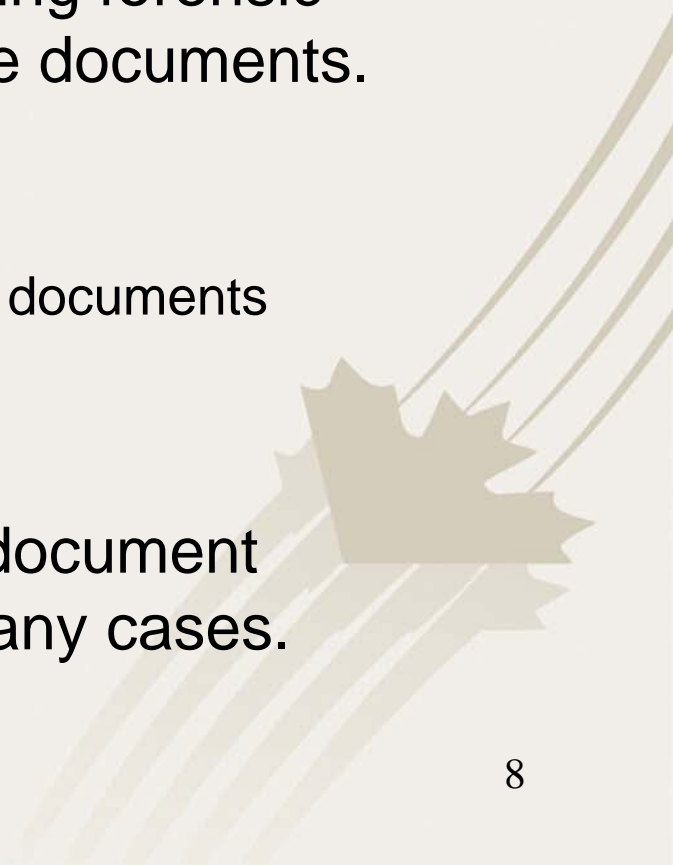
Training Programs Level III

- Target Audience: Experienced officers who require more advanced document analysis skills to produce expertise reports
- Level III: Document examination course
 - Currently in development for North America target date for first delivery in 2010-11.
 - Standardized analysis procedures
 - Advanced tools
 - Report writing
 - Court testimony
 - National and international partner liaison.
 - Knowledge and practical tests to measure participants ability in fraudulent document detection.



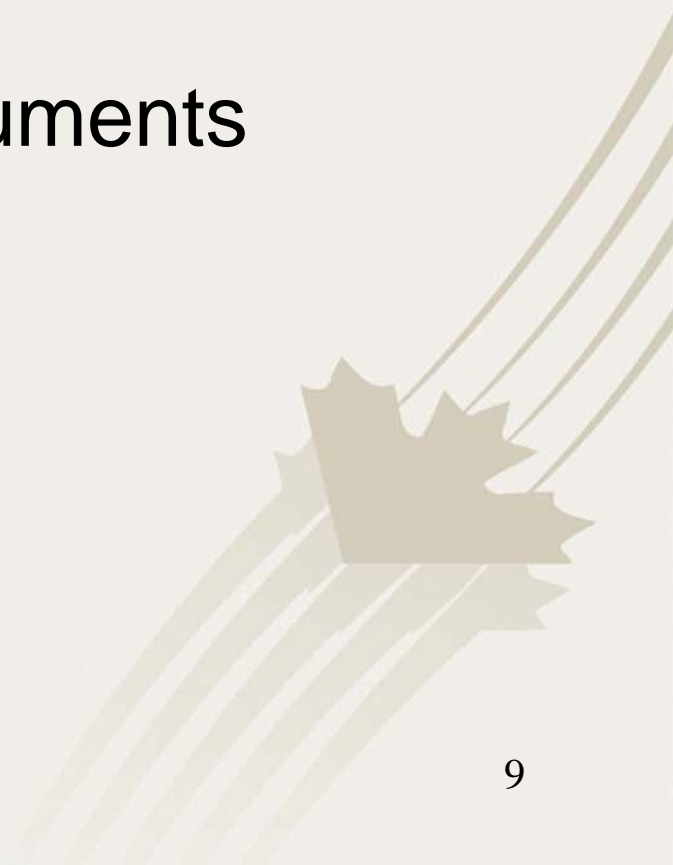
Forensic Level



- CBSA, through its laboratory of scientific services, also offers the possibility of performing forensic analysis and testing on questionable documents.
 - Specializing in forensic ink chemistry
 - Handwriting analysis
 - Restoration of charred or water soaked documents
 - Dating of documents
 - The laboratory's scientists and the document specialists work hand in hand on many cases.
- 

Success and Intercepts



- Fraudulent Travel and Identity Documents
 - Impostors on genuine documents
 - Other documentation
 - Commercial products
 - Tobacco
- 

Altered/Falsified Travel Documents



❖ Double laminates

Counterfeit Identity Documents



Counterfeit Customs Stamp on Vehicle Import Form



Canada Canada

VEHICLE IMPORT FORM - FORM 1 FORMULAIRE D'IMPORTATION DE VEHICULE - F

NOTICE TO PROVINCIAL / TERRITORIAL LICENCE AUTHORITY K-22 - AVIS AUX AUTORITES PROVINCIALES

The conveyance described herein has been accounted for by Canada Border Services Agency and may be licensed in Canada subject to:

Les présentes attestent que le moyen de transport désigné ci-dessous a été l'Agence des services frontaliers du Canada et peut être immatriculé au Canada.

1. A Canada Border Services Agency disposal restriction as indicated below and
2. Evidence of conformity with Transport Canada Safety Regulations as indicated in section 16 or 17.

1. Sous réserve de la restriction de l'Agence des services frontaliers du Canada indiquée ci-dessous et
2. Sous réserve d'une preuve de conformité.

Canada Border Services Agency disposal restrictions -
This conveyance may not be sold or disposed of in Canada. Ce moyen de transport ne peut pas être vendu ou autrement disposé au Canada.

At any time, without authorization from Canada Border Services Agency. En aucun temps, sans l'autorisation de l'Agence des services frontaliers du Canada.

on or before: _____ le ou avant le : _____

This conveyance is not subject to a disposal restriction. Ce moyen de transport n'est pas touché d'une restriction.

VEHICLE AND DRIVER INFORMATION

1. Vehicle id no. - N^o d'ident. du véhicule
Z F F E Z 1 5 9 C 0 1 0 9

5. Vehicle class (CHECK ONE ONLY) - Classe du véhicule

01 Bus / Autobus 02 Incomplete vehicle / Véhicule incomplet

05 Passenger car / Voiture de tourisme 06 Snowmobile / Motoneige

11 Truck / Camion 12 Restricted use vehicle / Véhicule à usage restreint

6. Manufacturer - Fabricant: Ferrari SPA
7. Make - Marque: Ferrari
8. Model - Modèle: F430
9. Model year - Année du modèle: 2008

10. (CHECK ONE ONLY) - (EN COCHER UNE SEULEMENT)

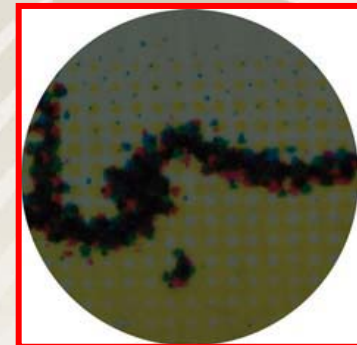
Compliance label affixed / Étiquette de conformité apposée
 Manufacturer's letter attached / Lettre du fabricant jointe

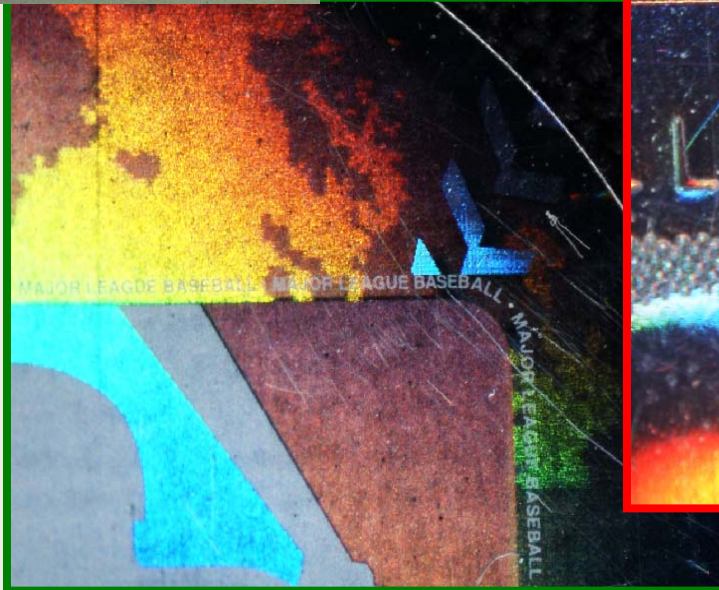
CANADA COSTOMS DOUANES
#36
JUL 28 2008
CLEARED CUSTOMS
205 COUITS
Officer's initials - Initiales de l'agent

10000807104433661

COSTOMS DOUANES
8 2008
CUSTOMS
COUITS
Initiales de l'agent
Preferred - Choix de langue
Français
French
passenger vehicle
tourisme à usages multiples
after dolly
conversion
d vehicle
à 4 roues

Counterfeit Products entering Canada







Thank you / Merci

Carolyn Dutot
Document Specialist
Canada Border Services Agency
Carolyn.Dutot@cbsa-asfc.gc.ca
Telephone: 613-954-3207