



**Asia-Pacific
Economic Cooperation**

2009/SCCP/SWWG/WKSP3/004

Korea Customs Unique Consignment Reference (UCR) Project

Submitted by: Korea



**Single Window Working Group Capacity
Building Workshop 3
Singapore
1-4 April 2009**



CONTENTS

- I. Outline of KCS' UCR Projects
- II. Updates on KR-PH UCR Project
- III. Outcomes & Lessons
- IV. Future Plans

I. Outline of KCS' UCR Pilot Projects

II-3. WCO Unique Consignment Reference

■ Why ?

- Korea Customs needs to implement its own UCR Guideline to prepare for the following new environments:
 - ✓ Launching the supply chain security program (WCO SAFE Framework, etc.)
 - ✓ Pilot projects on export data exchange and cargo security with other countries
 - ✓ Drawing up the strategy on global trade single window(UN/CEFACT Rec.33)
- Revised Customs Act has come into effect since January 1st 2008, which requests traders to declare the UCR and enables Customs administration to issue the UCR
- Simplified guidelines for the UCR is required for all trade and transport stakeholders in Korea

I. Outline of KCS' UCR Pilot Projects

■ History

- Data Exchange Pilot Project with Malaysian Customs (2000)
 - ✓ Send 19 data elements for 3 kinds of goods exporting to Malaysia
 - ✓ Receive 21 data elements for 3 kinds of goods importing from Malaysia
 - ✓ No primary key (i.e., UCR) for assessing exchanged data with import dec.
- Establishment of National Single Window (2003~2008)
 - ✓ 1st : Conveyance Report Single Window : C.I.Q. administrations
 - ✓ 2nd : Exp/Import Clearance Single Window : 13 PGAs
- Export Data Exchange Pilot with Belgium, the Philippines applying UCR (2008)
 - ✓ Belgium : Employing UCR by exporter in Korea
 - ✓ Philippines : Employing UCR in data exchange and CSD pilot



I. Outline of KCS' UCR Pilot Projects

■ Key Aspects

	Belgium Customs	Philippines Customs
Durations	Jun. 2007 ~ June 2008	Sep. 2007 ~
Scope	Data Exchange/UCR/CSD*	Data Exchange/UCR/CSD
Participants	Hyundai Mobis Co	Dong In Entech Co
Cargo Route	Busan → Antwerp	Busan → Manila
Data Standard	WCO CDM V2.0	WCO CDM V2.0
Applied UCR	KCS UCR Numbering Standard	KCS UCR Numbering Standard
Communication	Mail/Internet (XML)	Internet (XML)
Data Security	PKI (Public Key Infrastructure)	PKI (Public Key Infrastructure)

*CSD : Container Security Device



I. Outline of KCS' UCR Pilot Projects

■ Progress of the KR-PH Project *(continued)*

- MOU Signing Ceremony : Sep. 2007
- Drafting Terms of Reference (TOR) : Sep. 2007
- Drafting Global Single Window Test Plan : Nov. 2007
- Communication Test : Dec. 2007
 - ✓ Exchange sample XML messages
- Amendment of Korea Customs Code : Dec. 2007
 - ✓ New provision :§255-3
 - ✓ Legal background for data exchange with other countries & the use of UCR



I. Outline of KCS' UCR Pilot Projects

■ Progress of the KR-PH Project *(continued)*

- Modification of electronic documents : Jan. 2008
 - ✓ Add a data element of UCR into electronic export declaration and export manifest form
 - ✓ Release modified MIGs for VAN/EDI communication, and modified schemas for internet communication
- Real Data Exchange : Jan. 2008 ~
 - ✓ 1st: 10 EX1 XML messages every day → 2nd: real-time data exchange
- Appointment of participants for the UCR project : Jan. 2008
 - ✓ Dong In Entech Co and its branch companies in the Philippines



I. Outline of KCS' UCR Pilot Projects

■ Progress of the KR-PH Project *(continued)*

- Modification of ERP systems of participants : Feb. 2008
 - ✓ Exporter : Installation of automatic UCR issuing program
 - ✓ Freight Forwarder & Sea Carrier : Amendment of their ERP systems to enable to lodge UCR numbers while submitting electronic manifests to Customs
- UCR declaration : March. 2008
 - ✓ 1st: Export Declaration (Internet) → 2nd: Manifest (VAN/EDI)
- Working Level Meeting in Manila : May. 2008
 - ✓ Importer & freight forwarder : Agreed on the declaration of UCR numbers issued in Korea from import manifest to cargo releasing
 - ✓ Philippines Customs : Agreed on the modification of electronic systems for accepting UCR numbers issued in Korea



I. Outline of KCS' UCR Pilot Projects

■ Basic Principles of KCS' UCR numbers *(continued)*

- Issuing Agency : Korea Customs Service
- Time of issuing UCR : Contracting level is recommended
- Time of declaring UCR
 - ✓ 1st : Export goods declaration
 - ✓ 2nd : Export manifest
- Numbering Structure
 - ✓ Length : 21 digits in maximum
 - ✓ Composition : IAC(2~3 digits), Year(1), Company ID(6), Serial No(7~10), Check digit(1)
 - ✓ Unique for at least 10 years in national & international level



I. Outline of KCS' UCR Pilot Projects

■ Basic Principles of KCS' UCR numbers *(continued)*

✓ Example of UCR number

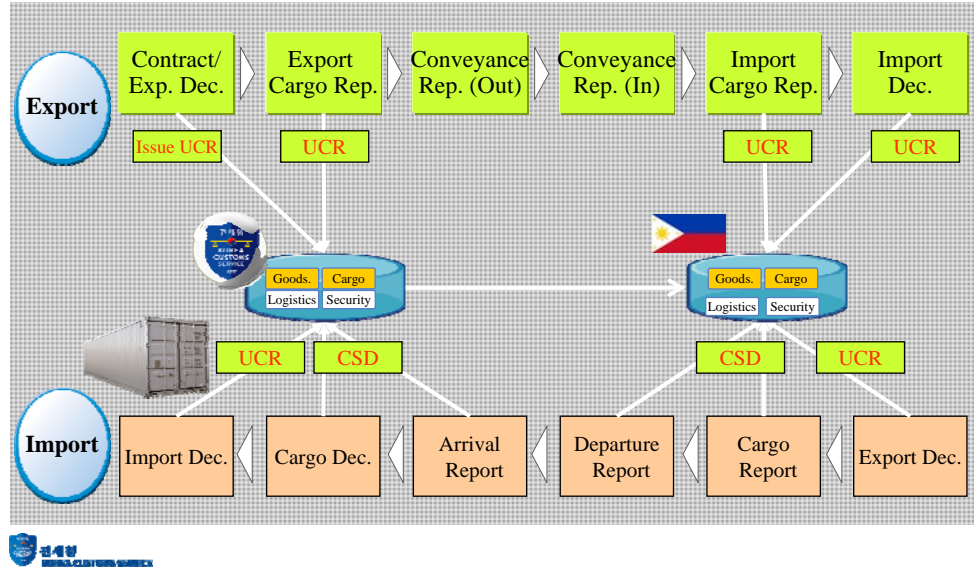
(KC8MOBIS100000010011)

KC	8	MOBIS1	0000001	001	1
IAC	Year	Company ID	Serial No	Sub-Serial No	Check Digit

II. Updates on KR-PH UCR Project

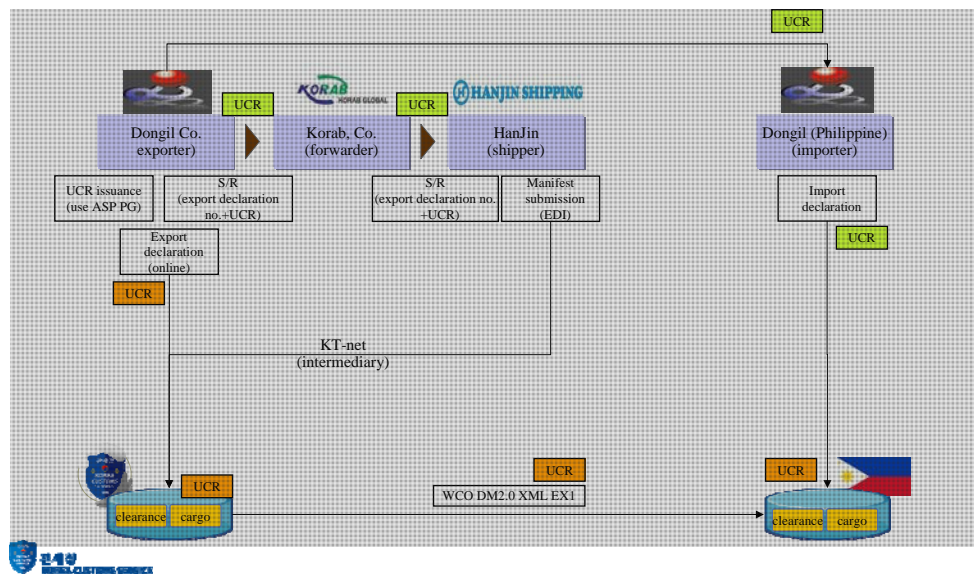
II. Updates on KR-PH UCR Project

■ Conceptual Diagram of Data Flow & Cargo Management



II. Updates on KR-PH UCR Project

■ Overall UCR Declaration Process



II. Updates on KR-PH UCR Project

■ Input UCR Numbers by the Carrier

Booking Number: KOR25075201 A1

Export License Number	SMP PKG	TP	UCR No
023-10-08-0051723-0	0		RC-8-DONGJIN-0000475U-8
023-10-08-0051744-3	0		RC-8-DONGJIN-0000465U-7
023-10-08-0051745-0	0		RC-8-DONGJIN-0000464U-0

Buttons: Retrieve, Save, Close, Add, Delete

- ❑ Add the UCR delivered via SR by exporters to the manifest reporting.
- ❑ Store the UCR mapping data in the shipper's own ERP

II. Updates on KR-PH UCR Project

■ Manifest Declaration by the Carrier

UCR Numbers

(별지 제6호 서식) 대한민국세관 KOREA CUSTOMS SERVICE 혼재화물적하목록(해상수출) Sea Consolidated Cargo Manifest

지	지	지	지	지	지	지	지	지	지	지	지
지	지	지	지	지	지	지	지	지	지	지	지
HSL1010029473	ICBL0949W 01	E						020150701 526041			C-T-MOEB B-1-UF100000-1-000
HSL1010029474	ICBL0949W 02	E						020150701 526042			C-T-MOEB B-1-UF100000-1-001
	ICBL0949W 03	E			B/L단위로 분할		020150701 526042			C-T-MOEB B-1-UF100000-1-002	
	ICBL0949W 04	E					020150701 526042			C-T-MOEB B-1-UF100000-1-003	
HSL1010029475	ICBL0949W 05	E						020150701 526045			C-T-MOEB B-1-UF100000-1-000
					B/L단위에서 통합		020150701 526046			C-T-MOEB B-1-UF100000-1-000	
							020150701 526047			C-T-MOEB B-1-UF100000-1-000	

II. Updates on KR-PH UCR Project

■ UCR Declaration in the Philippines

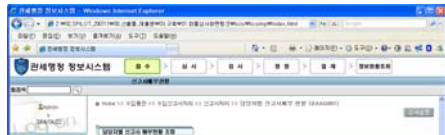
PH-PMPMI-0000001-PO2A-0



II. Updates on KR-PH UCR Project

■ Assessment of Received Data

Screen of auditing import declaration by a Customs officer



UCR

관세영정 정보시스템			
Home >> 수입통관 >> 수입신고서처리 >> 신고서처리 >> 심사/통관 등록(공동사망)(BAC0001)			
심사/통관 등록 (공동사망)			
신고번호: 10051 11 BAC0010 11			
* 조회가 완료되었습니다.			
시유신고			
입사번호	0103001001	신고일자	07/04/19
취득관리번호	07NE04A000000002	결수형태	11 신고 수리(2)납부
신고자	장관배 대안판매사무소	수입자	(주)신도리보 A
납세허가자번호	(주)신도리보	소재지 우편번호	133
대표자	최희선(한인)	주소	서울시 영등구 영수271 271-02
통관공무원번호	신도리보-1-60-1-01-7	사업자번호	2188100028
무역대리점			
공급자	USHO HONG KONG LTD		
통관계회	O M세 구역관리부	거래구분	11 일반판매수입
신고구분	8 일반서류신고	수입종류	X 일반수입(비수출)
국내도착항	PUS 부산항	총중량	404 KG
운송형태	10-LC	총포경계수	20 BE
MASTER B/L	POBJANL0708DU012	선지명	HANJIN SURABAYA
검사장소	0611102-06016031 제61601 연 풍미 방사선고	납품교역	
세관거래관(여부명)	등산지표사업부		



II. Updates on KR-PH UCR Project

■ Assessment of Received Data (continued)

The diagram illustrates the process of data assessment. It starts with an 'Import Declaration' (left), which is processed through 'UCR' (United Cross Reference) and 'crosschecking' (indicated by a blue dashed arrow) to produce a 'Received Document' (bottom). The 'Received Document' is then used to generate an XML message (right).

적출국 수출신고 공동 내역	
B/I 번호	8US2007243
UCR (핵심고유식별부호)	8US2007243
Exporter Name (수출자 상호)	SAMWON PRINTING CO.,LTD.
Importer Name (수입자 상호)	FILCO STATIONERY CO INC
Declaration Packaging (총 포장개수)	20 BE
Total GrossMass (총 중량)	484 KG
물건 품목 내역	
Description (품명) [1]	LAMINATING PAPER
TariffClassification (세관 번호)	48101
NetNet Weight (순중량)	180 KG
GoodsPackaging Quantity (포장 수량)	20 BE
Description (품명) [2]	PATCH
TariffClassification (세관 번호)	482110
NetNet Weight (순중량)	273
GoodsPackaging Quantity (포장 수량)	0 VO
운송/선적 내역	
Border Transport Means (국간통과 운송수단)	MOL ACCLAIM
Identity (선박호출 번호)	3EEU8
Journey (항차)	00235
Registration Nationality (등록국가)	PA
Departure (출항일자)	2007-04-07
Carrier Name (운송사 상호)	MITSUBI O.S.K.LINES,LTD
Delivery Destination (목적지)	KR
Loading Location (선적지)	PHMNL
Unloading Location (항적지)	KRPUS
운송용기(컨테이너) 내역	
Characteristic (운송용기 종류) [1]	22GP
Seal (포지 번호)	165229
Equipment Identification (식별부호)	GLDU3337438
Characteristic (운송용기 종류) [2]	43GP
Seal (포지 번호)	436501
Equipment Identification (식별부호)	MOLU704412

II. Updates on KR-PH UCR Project

■ Assessment of Received Data (continued)

The diagram illustrates the process of data assessment. It starts with a 'Received Document' (left), which is processed through 'UCR' (United Cross Reference) to generate a 'Real EX1 XML Message' (right). The XML message is then used to generate an XML file (bottom).

```

<?xml version="1.0" encoding="UTF-8" ?>
<xml:ExportDeclaration xmlns:xs="http://www.w3.org/2001/XMLSchema-instance"
  xsi:schemaLocation="urn:kr:gov:kcs:data:draft:PILOT_ExportDeclarationSchemaModule:0:1:0 ../schema/pilot/data/PILOT_ExportDeclarationSchemaModule:0:1:0"
  xmlns:ram="urn:kr:gov:kcs:common:draft:WCO_ReusableAggregateBusinessInformationEntitySchemaModule:0:1:0"
  xmlns:imns="urn:kr:gov:kcs:data:draft:PILOT_ExportDeclarationSchemaModule:0:1:0">
  <ram:Function><ram:Function>
    <ram:Reference>010150703792830</ram:Reference>
    <ram:TotalGrossMass>484</ram:TotalGrossMass>
    <ram:Type>423</ram:Type>
    <ram:DeclarationPackaging>
      <ram:Quantity>20</ram:Quantity>
      <ram:Type>BE</ram:Type>
    </ram:DeclarationPackaging>
    <ram:Exporter>
      <ram:Identity>1308121154</ram:Identity>
      <ram:Name>SAMWON PRINTING CO.,LTD.</ram:Name>
    </ram:Exporter>
    <ram:GoodsShipments>
      <ram:Consignment>
        <ram:Sequence>00001</ram:Sequence>
        <ram:BorderTransportMeans>
          <ram:Departure>2007-04-17T00:00:00</ram:Departure>
          <ram:FirstArrivalLocation>N/A</ram:FirstArrivalLocation>
          <ram:Identification>MOL ACCLAIM</ram:Identification>
          <ram:Identity>3EEU8</ram:Identity>
          <ram:Journey>00235</ram:Journey>
          <ram:RegistrationNationality>PA</ram:RegistrationNationality>
        </ram:BorderTransportMeans>
        <ram:Carrier>
          <ram:Identity>MOLU</ram:Identity>
          <ram:Name>MITSUBI O.S.K.LINES,LTD</ram:Name>
        </ram:Carrier>
        <ram>LoadingLocation>
          <ram:Code>PHMNL</ram:Code>
          <ram>LoadingLocation>
        </ram>LoadingLocation>
        <ram:TransportEquipment>
          <ram:Characteristic>22GP</ram:Characteristic>
          <ram:Seal>165229</ram:Seal>
          <ram:EquipmentIdentification>

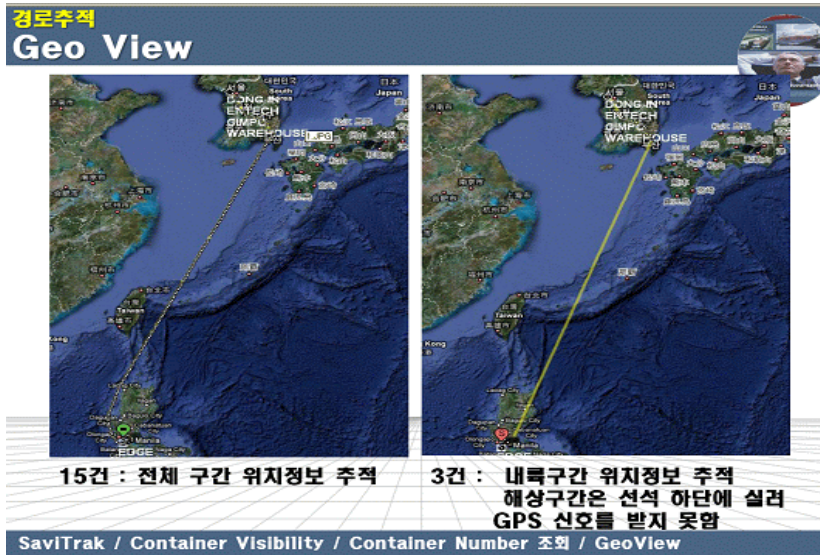
```

PH10150703792830_20080404161835.xml

Applying UCR in CSD pilot

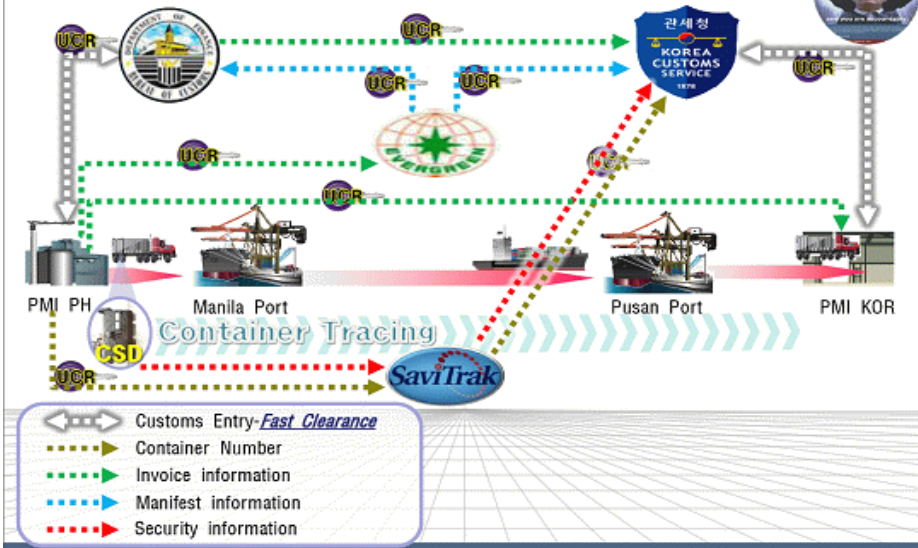


Geo View utilizing Google earth map



Applying UCR in CSD pilot

Data Upload flow



III. Outcome & Lessons

III. Outcomes & Lessons

■ Outcomes

- Statistics on data exchange with the Philippines(Jan. 2008 ~ Dec. 2008)
 - Send : 2,404 messages
 - Receive : 1,755 messages
- Risk Management
 - comparing the received data with information in import manifest & declaration using UCR
 - Data exchange with other countries is mandatory for security and facilitation of global trade
- Export cargo tracking
 - Provide export cargo tracking service using UCR by Customs
 - Manage supply chain from source to destination using UCR by traders
- Pre-requisite for Data Harmonization & Standardization



III. Outcomes & Lessons

■ Lessons

- Resources
 - Necessity of independent department or team
 - Time & budget
- Regular Meeting
 - Periodical conference call
- Collaboration
 - Among departments, with the private sector, between countries
- Feasibility Study
 - Evaluation of partners : IT infrastructure, political willingness, resources, etc
- Experience
 - Important to succeed in the completion of projects



III. Outcomes & Lessons

■ Lessons

- Data Standard
 - Some of data elements : Inconsistent with WCO Data Model
- Language Issues (e.g., company names)
- Business Confidentiality
 - Invoice Amount
- EX1 & CRE messages
 - Necessary to exchange EX1 & CRE messages respectively for split cargo
- Participants
 - Unwillingness of participation in the private sector

IV. Future Plans

IV. Future Plans

■ White Paper on the UCR Pilot Project

- Necessary to share valuable experiences and lessons with other members & international trade communities
- Agree to publish white paper on the UCR pilot project with Philippines Customs
 - ✓ Administrative & technical details on the projects, outcomes, obstacles, lessons, etc

■ Expand & Upgrade UCR Projects

- Consider regular data exchange & UCR projects with PH & BE
 - ✓ Philippines companies may issue UCR numbers for cargo exporting to Korea
- Study the feasibility of more data exchange & UCR projects with other countries

Thank You
감사합니다.