



Douane  
Belastingdienst



**WCO T&I Forum  
5–9 March  
Kuala Lumpur**

**NII Innovation in the  
Netherlands with help of  
R&D**

[jl.groeneveld@belastingdienst.nl](mailto:jl.groeneveld@belastingdienst.nl)



# Dutch Tax and Custom administration

- **Political driven organisation**
- **Logistic flow of goods**
- **Stakeholders / Industry**



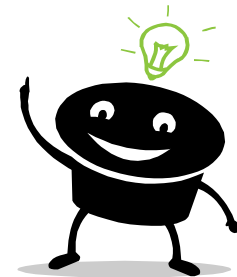
- **Innovation with the help of Research and development**
- **Innovation with the help of existing technologies**
- **Innovation with the help of creative thinking**



## Innovation with the help of research and development

### Train scanning system in logistic flow of containers

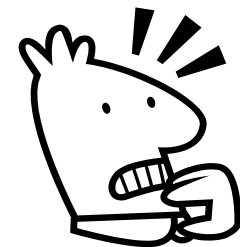
- No interruption of trains logistic
- Suitable and available location
- Scanning with speed of 60 km per hour
- Permission to build on railway infrastructure
- Budget available





## Research Trip is essential

- Getting permission to visit suppliers of x-ray cargo screening systems
- Contacting suppliers
- First reaction suppliers





- Positive reactions



- Negative reactions



- Check of technical solution by independent research institute TNO



- Use all the gained information in tender procedure

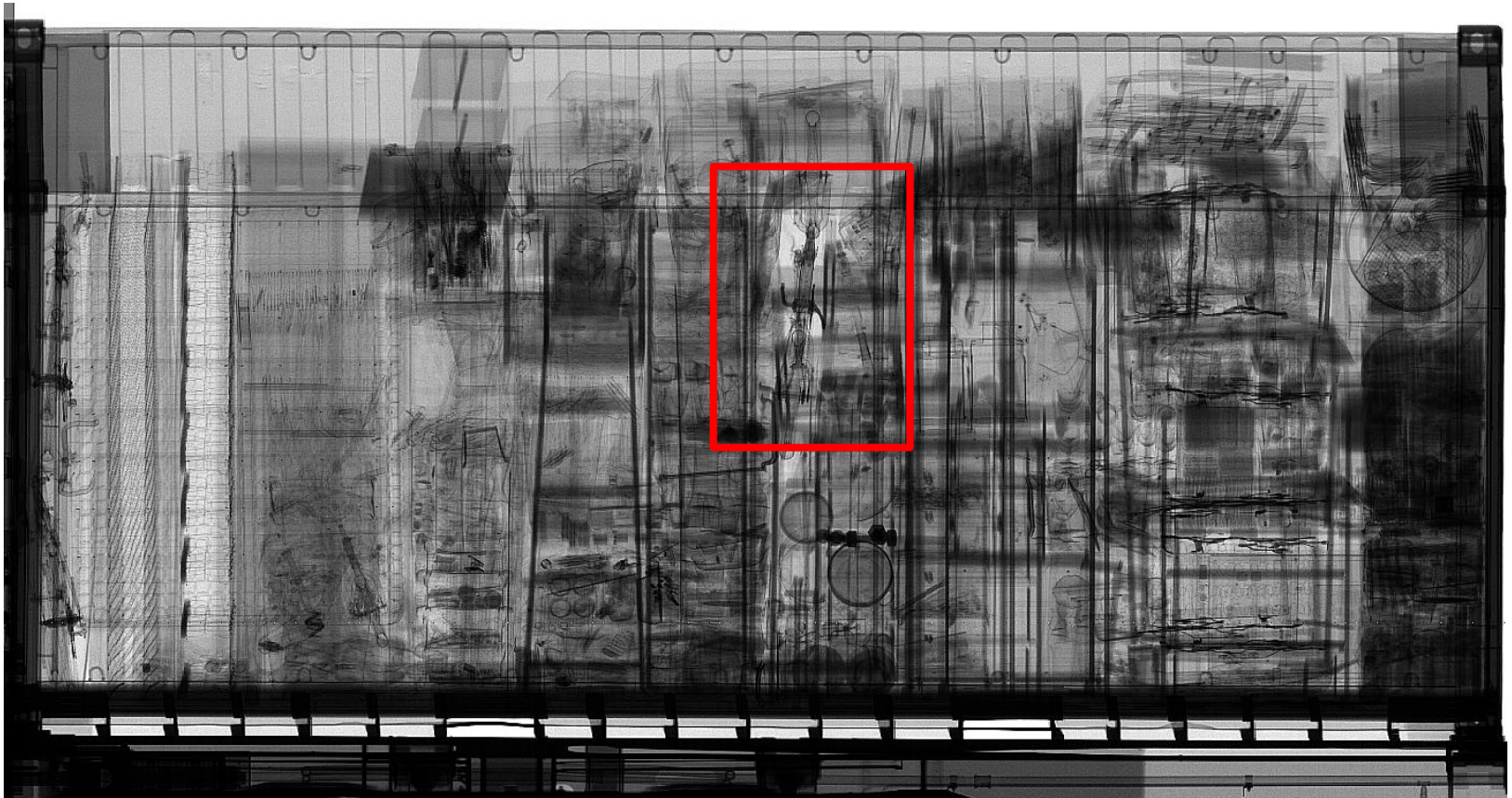


- Successful project













## **Innovation with the help of existing technology**

### **Problem: Smuggling forbidden goods in airplanes**

- No interruptions of Airport/ airplane logistics
- Time for inspections is short
- Physical checks are time consuming
- No devices for speeding up the process

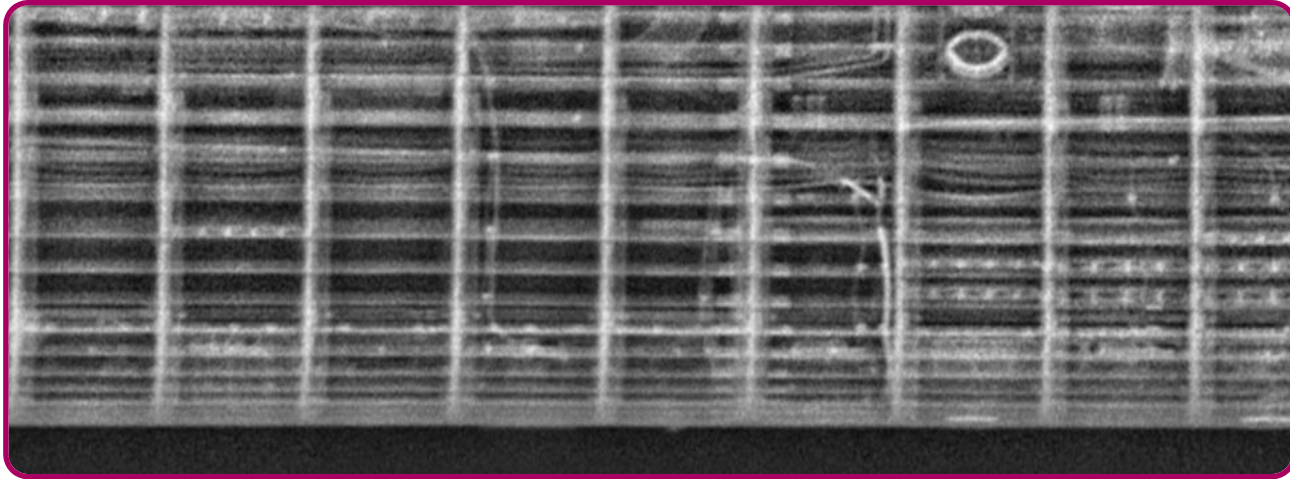


### **Scanning airplanes with the help of Backscatter technology**

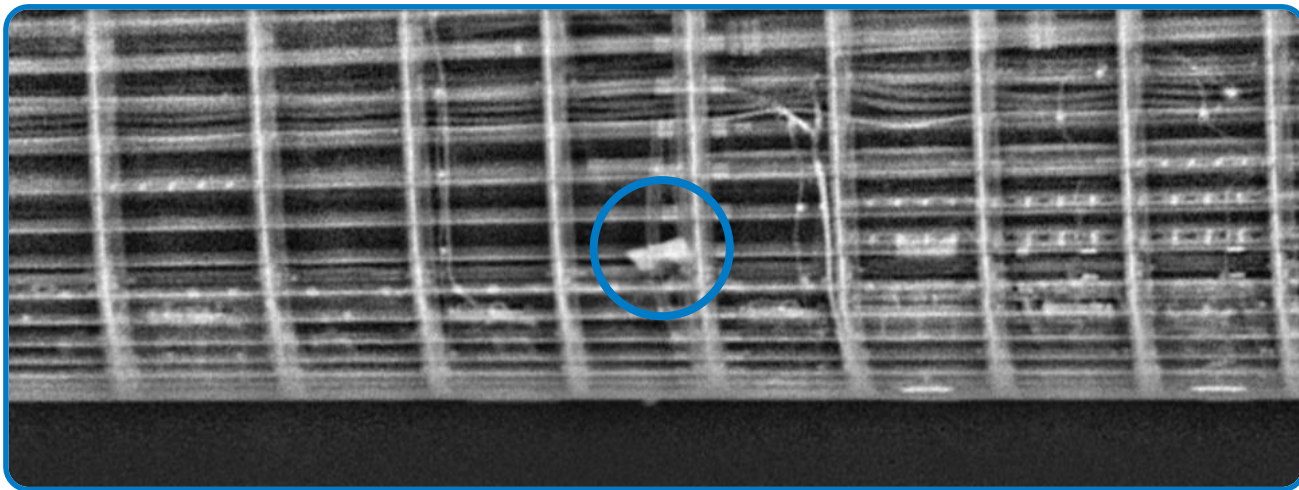




No  
threat



Organic  
material





## Innovation with the help of creative thinking





## X-ray scan in area of automated guided vehicles

### Customs inspections in the logistic of the container terminal

Saving:

- Costs
- Time
- Fully automated x-ray system
- Centralised image interpreting





**Thank you for your attention**