



# **Customs Border Risk Management of KCS**

**(Tracking system of high-risk vessel and cargo & CCTV system)**

**March 8, 2012**

**Korea Customs Service**

# Table of Contents

**1. Mission and Vision of KCS**

**2. Background**

**3. Introduction of KCBCC**

**4. Case Study**

**5. Promotional Video**

# 1. Mission and Vision of KCS

Mission

Strong economy, the border and customs protection for a safe society

Vision

The world's best customs service realizing the leading country in trades  
(Faster, safer and more convenient)

CLEAR  
Code of  
conduct

Think creatively. Creativity

Listen to the voice of the customers carefully. Listen

Work with passion. Energy

Act on the spot. Action

Communicate actively and work in harmony. Relationship

Strategies

WBC(World Best Customs) 2012

Core values

Partnership

Honor  
&  
Pride

Change  
&  
Innovations

World's  
best

## 2. Background

**Enhanced Border Control**

**Rapid expansion of  
trade volume**

**Setup of the KCBCC**

**Growing importance of  
trade security**

**Difficulty  
to increase manpower**

**Need  
for integrated  
risk  
management**

**Ubiquitous  
surveillance**

**Immediate  
response to major  
crimes**

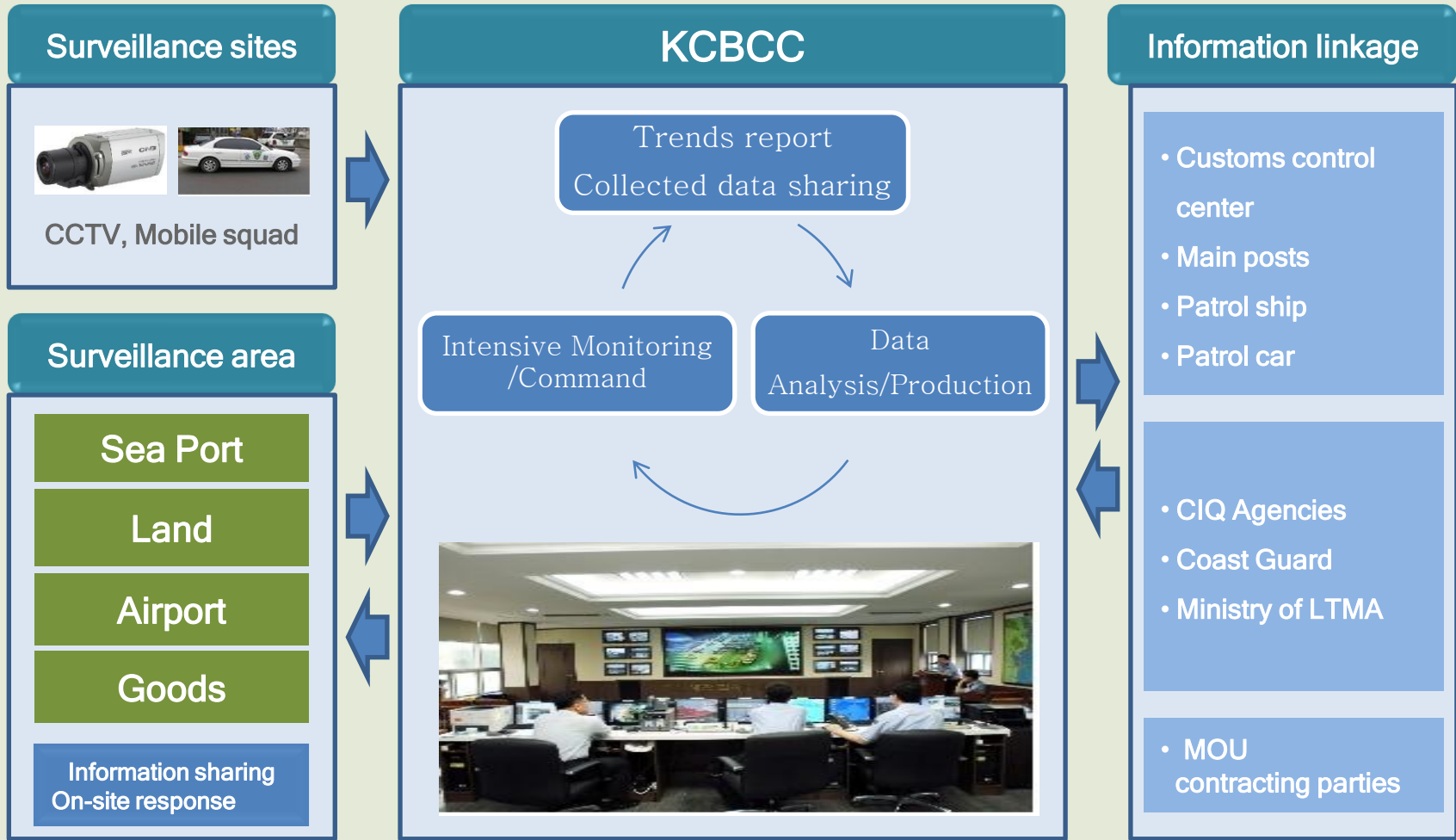


# 3.1. CCTV linkage

- Customs office (9)
- Regional Center (14)
- CCTVs (415)



# 3.2. Operating System



## 3.3. System Configuration

- **IN-POSS(Integrated Port Surveillance System)**
  - **CBMS + CCTV System + VMS**
- **e-Seal System**
- **Statistics Management System**
- **4 News channels**
  - **YTN, CNN, National Assembly TV, KTV**

# 3.3-1 IN-POSS(CBMS)

- CBMS(Customs Border Management System)
  - Real-time reporting and sharing of Customs border-related affairs
  - Daily Report to Commissioner and Directors of the KCS

**관세국경 일일상황**  
 <2012. 2. 9.(목) 07시 현재>  
 관세국경 종합상황실 (01-3270~1)

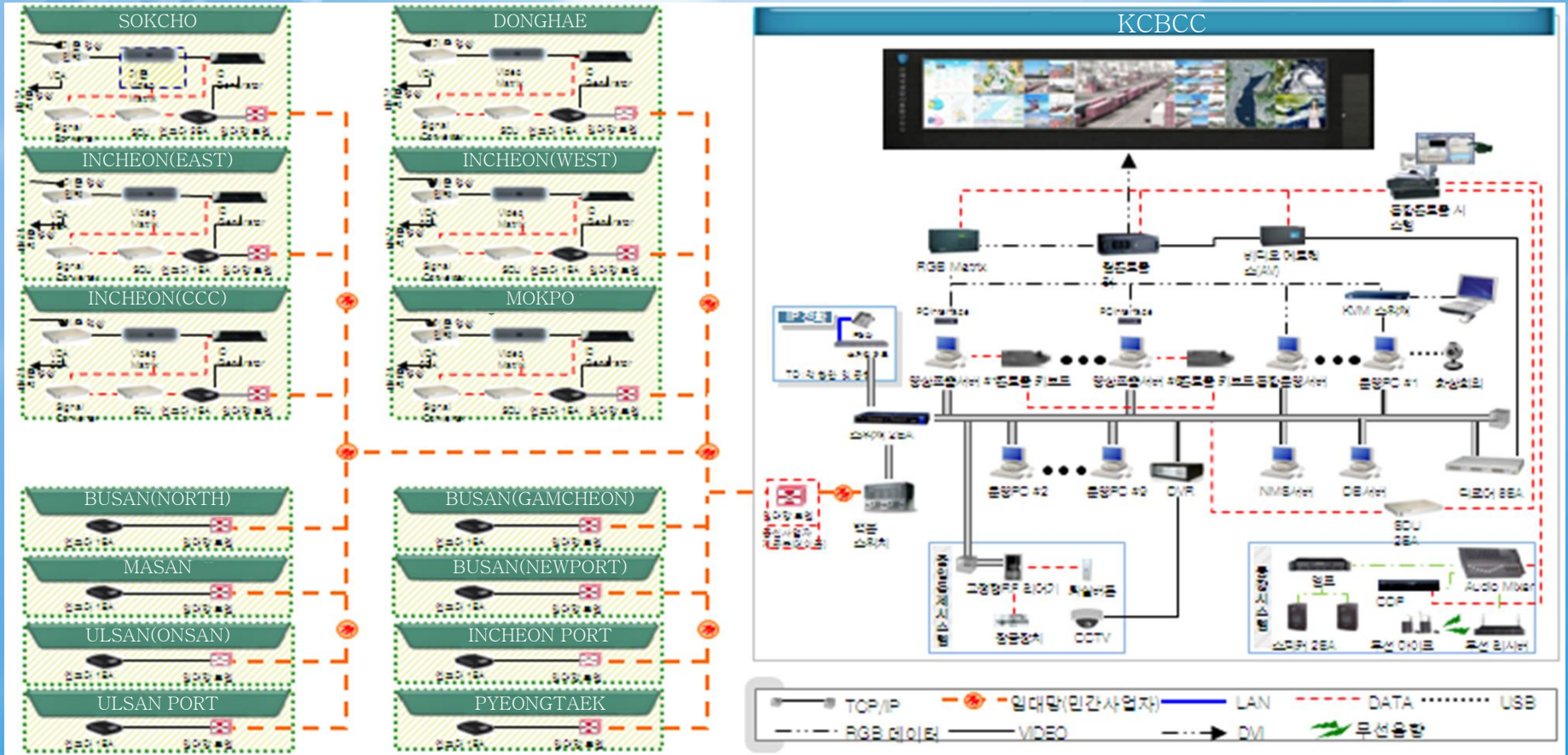
□ 주요 동향

- (관세국경감시과) 핵안보정상회의 대비 현지실태 점검(29)
  - 정상회의의 성공적 개최를 위한 도리산, 인천공항세관의 인력 및 검색장비 활용 대책 등 이행실태 점검(과장외 2명)
- (인천공항국제우편세관) 세관별 안보위해물품(도검류) 적발(2.8)
  - 우편물 X-RAY검사로 도검류(POCKET KNIFE) 17점 적발(2건), 유치
- (인천공항세관) 마약투여사범 검거(2.8)
  - 2220경 KE694(홍콩)편으로 입국한 하정현(33세,남)을 APIS검사대상자로 지정,

# 3.3-2 IN-POSS(CCTV System)

## ● CCTV System

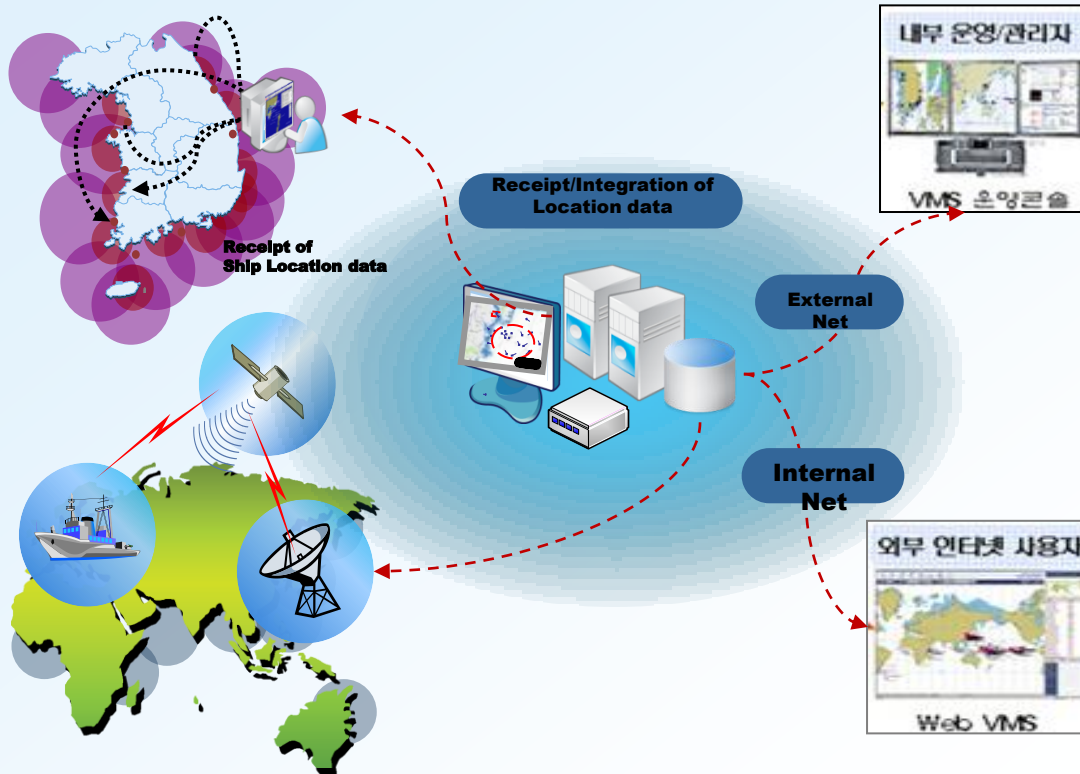
- Customs office(9): Sea port(8), Airport(1)
- Regional center(14): Customs control center(8), Monitoring center(6)
- CCTVs(415): the Head office also has an access/control



# 3.3-3 IN-POSS(VMS)

Tracking, controlling and communicating between ships on Electronic Marine Map by receiving and integrating all Ships' Location Data with using various Marine communication networks in real time

## System Organization



## Main Features

- Ship Location Data transmission/receipt in real-time in connection with various real-time marine Communication Network (coast/ocean)
- Standardization & Real-time Integration of Ship Location Data received by different communication networks
- Provision of Standardized Ship Location Data in real-time.
- Provision of Ship Safety D/B
- Provision of Alarm Data of Ship Sailing Analysis & Ship Security Monitoring Data
- D/B Maintenance of Sailing Data in the past

## References

- GICOMS Center of MOLTM
- KCG(Korea Coast Guard) Control Center
- KSA(Korea Shipping Association) Shipping Control Center

# 3.3-4 IN-POSS(e-Seal System)

## ● e-Seal System

- Real-time system to monitor high-risk cargo on the basis of RFID and GIS
- CCC monitors 24 hours all year round.



### 지정구역 관리 주요기능

컨테이너번호	ABCD1234567
상태	지정구역진입
차량번호	인천99A11234
출발지	인천항
도착지	인천공항
담당자	XXXX
연락처	010-XXXX-XXXX

### 위반사항 경고/알람/호출관리 주요기능

- 위반사항 발생시 화면 출력 및 해당 지역 현장 감시직원에게 자동으로 SMS 및 유무선 통보

컨테이너번호	ABCD1234567
상태	위반(무단개항)
출발지	인천항
도착지	인천공항
담당자	XXXX

# 4 . Case Study(1)

## ● Smuggling detected through CCTV system(April 2011)

- When: April 2011
- How: Analysis of a suspected vehicle at specific time
- What: Mountain ginseng, Luxury watches etc, \$ 6million
- Who: Security guard, crew
- Time frame: 2 min. 30 sec.



Unloading



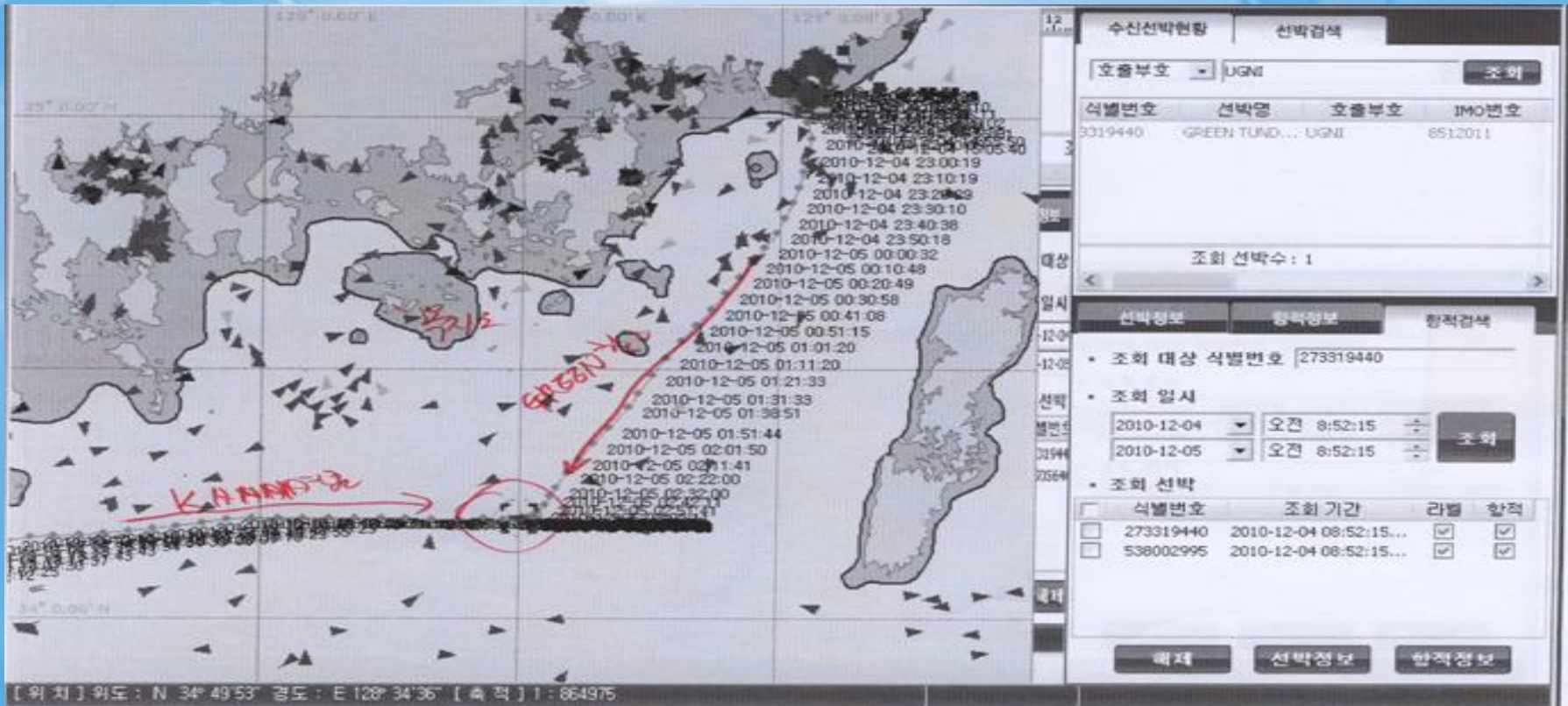
Loading into a vehicle



Time frame: 2.5 min

# 4. Case Study(2)

- Transferring to another vessel
  - When : December 2010
  - How : Vessel Monitoring System
  - What : Frozen fish



# 5. Promotional Video



**6. End**

A blue-tinted world map is centered on the slide. A bright sunburst with rays emanating from the center is positioned over the Indian Ocean region. The text "Thank You !" is overlaid on the map.

**Thank You !**