

# Airports Council International

## HOW SECURITY CONTRIBUTES TO THE ECONOMIC COMPETITIVENESS OF THE AIR CARGO INDUSTRY

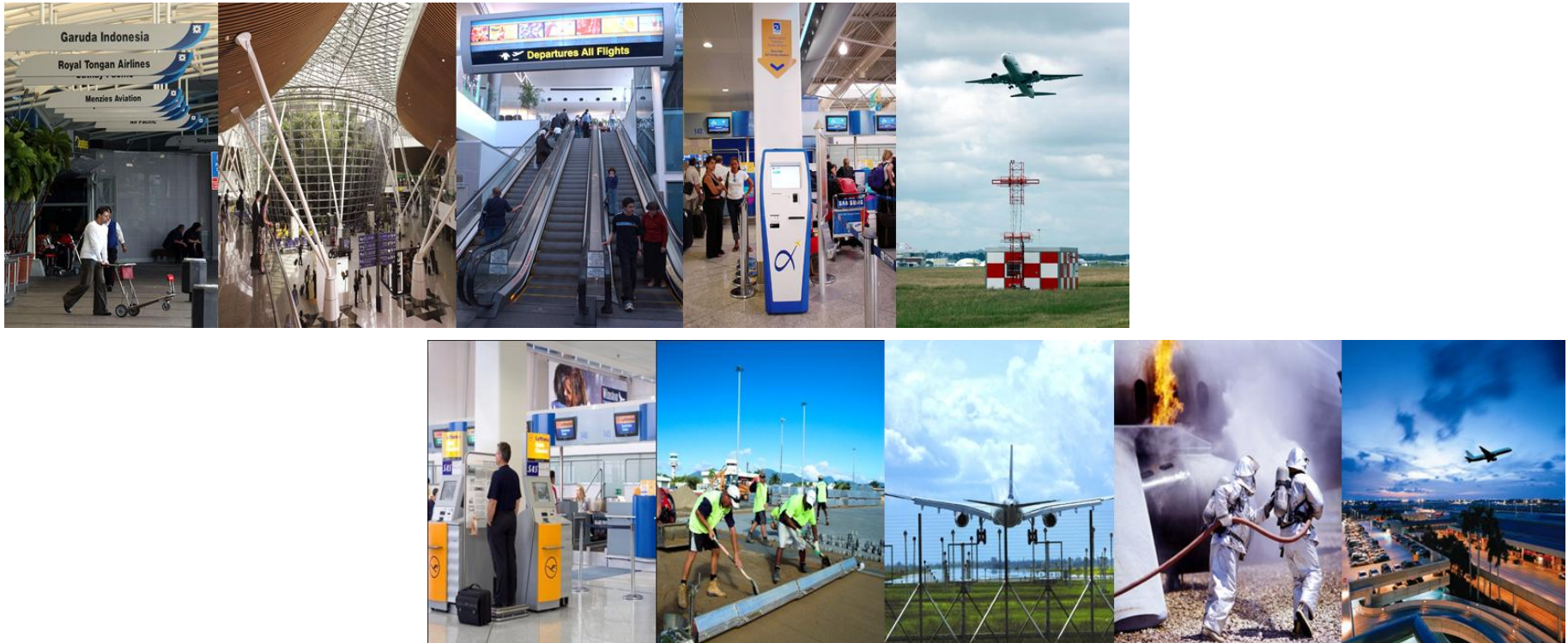
16 APRIL 2014

Michael Rossell  
Director ICAO  
Relations  
ACI World

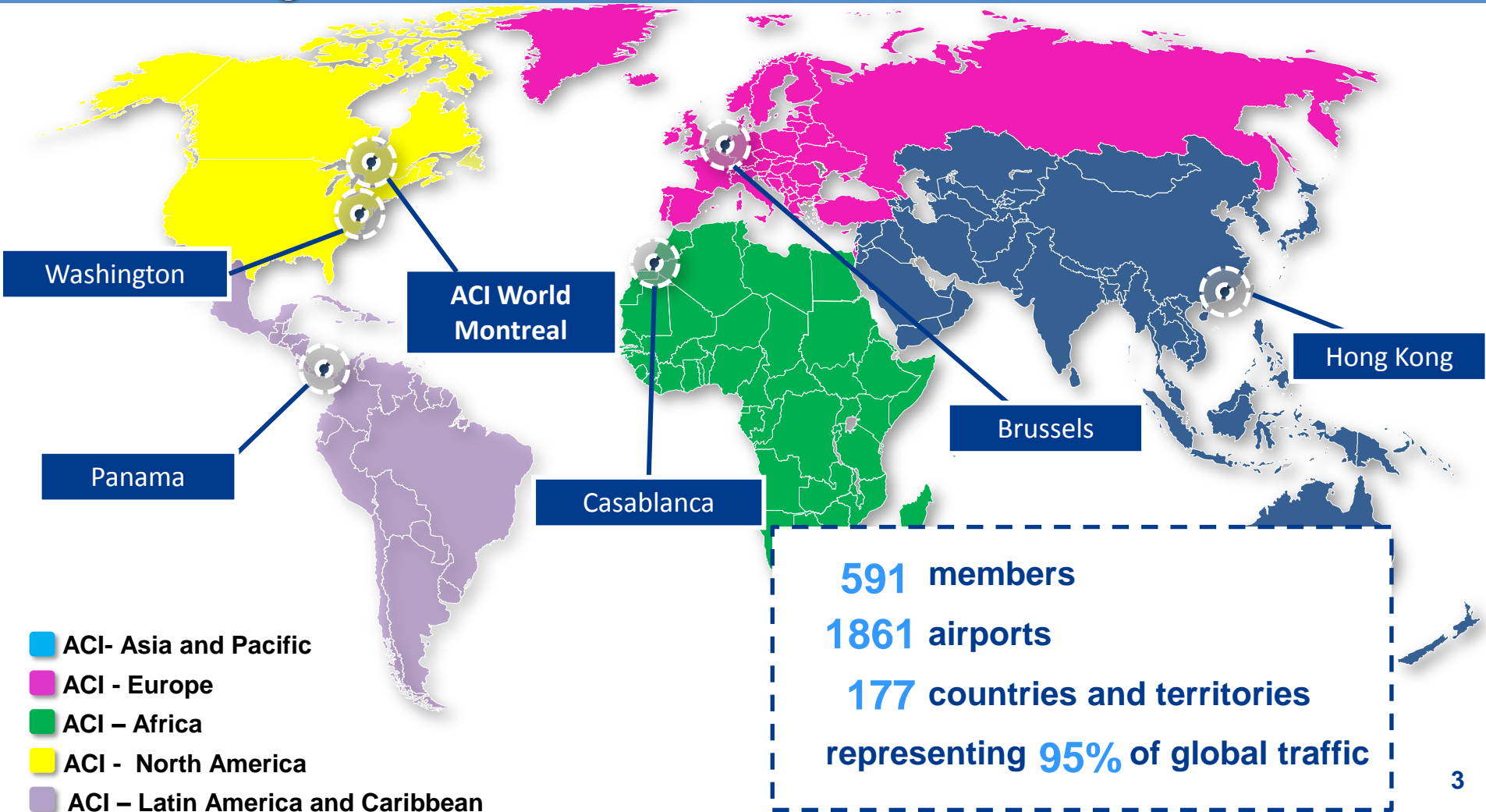


## Mission

**ACI promotes the interests of the world's airports and the communities they serve and promotes professional excellence in airport management and operations.**



# ACI Regional Offices

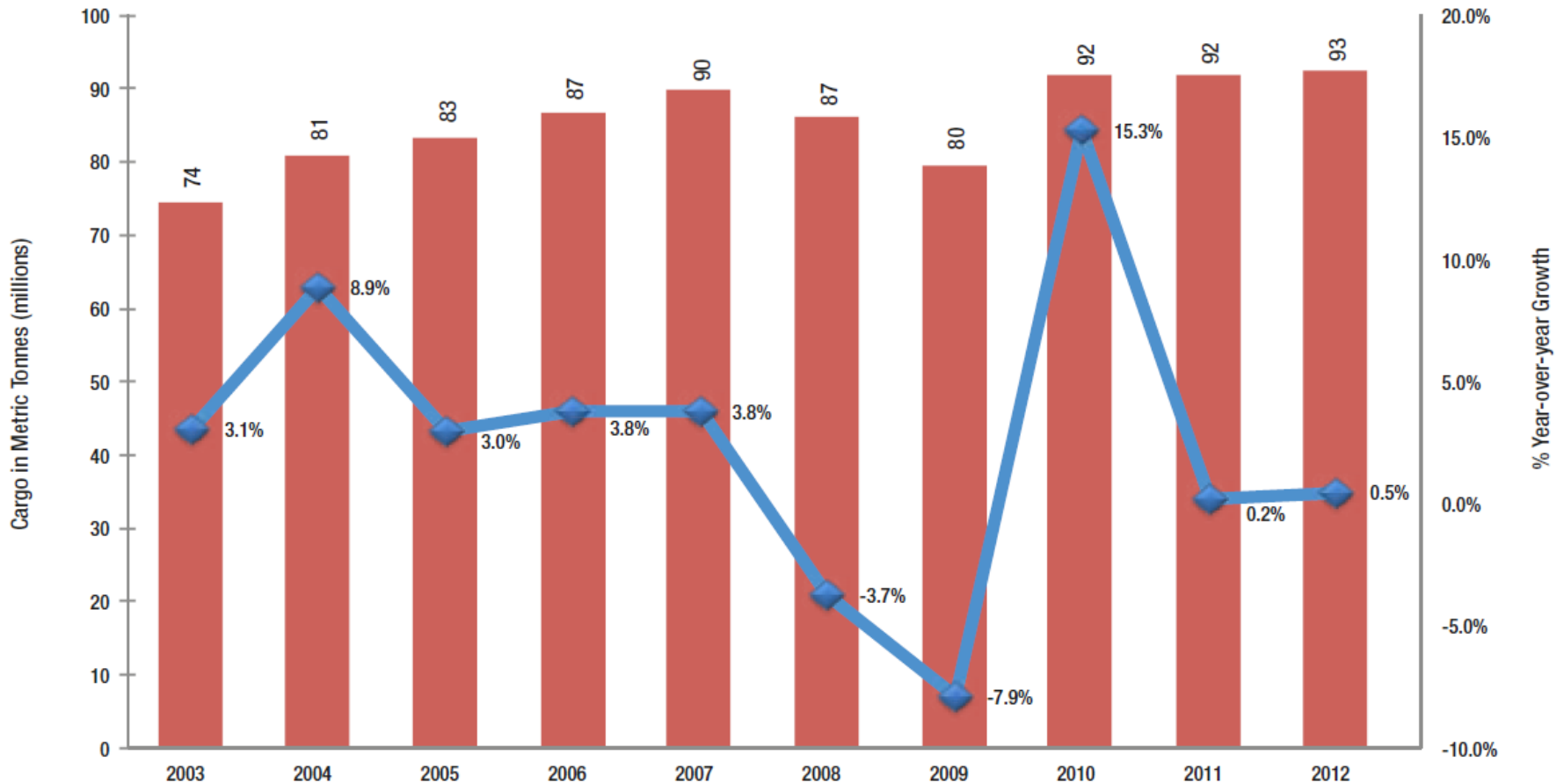


## ACI in Montreal

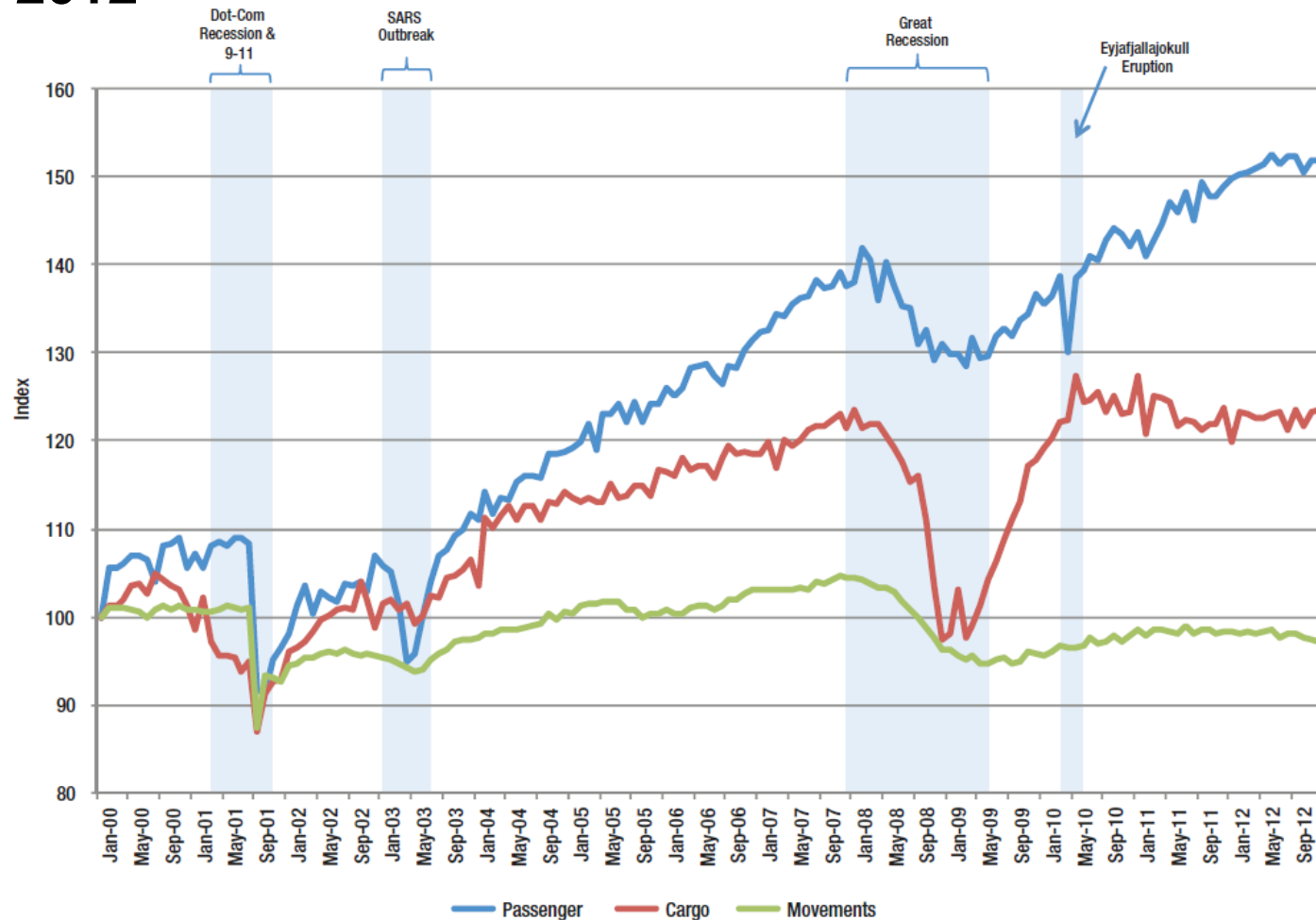
- Originally based in Geneva
- Needed more engagement with ICAO by ACI subject matter experts
- Moved to Montreal in 2011
- Cooperative ventures on safety and increasingly on security



# Total Worldwide Air Cargo 2003-2012



# Total Worldwide Movements, Passengers and Cargo Evolution 2000-2012



## Top 20 Fastest Growing Airports Over 250 Thousand Tonnes of Cargo

Rank	City, Country	Airport Code	Cargo (Metric Tonnes)	% Change	Region	World Rank
1	Honolulu, USA	HNL	412,270	26.0%	North America	52
2	Abu Dhabi, United Arab Emirates	AUH	574,012	17.6%	Middle East	38
3	Riyadh, Saudi Arabia (Kingdom of)	RUH	305,943	15.9%	Middle East	65
4	Leipzig, Germany	LEJ	846,093	13.7%	Europe	25
5	Chongqing, China (People's Republic of)	CKG	268,642	13.1%	Asia-Pacific	76
6	Manila, Philippines	MNL	460,135	12.1%	Asia-Pacific	45
7	Cincinnati OH, USA	CVG	538,674	11.8%	North America	41
8	Hangzhou, China (People's Republic of)	HGH	338,371	10.5%	Asia-Pacific	59
9	Beijing, China (People's Republic of)	PEK	1,799,864	9.7%	Asia-Pacific	13
10	Istanbul, Turkey	IST	561,173	9.2%	Europe	39
11	Jakarta, Indonesia	CGK	634,751	9.1%	Asia-Pacific	33
12	Ontario CA, USA	ONT	412,661	9.0%	North America	51
13	Copenhagen, Denmark	CPH	354,269	6.4%	Europe	58
14	Chengdu, China (People's Republic of)	CTU	508,040	6.4%	Asia-Pacific	42
15	Santiago, Chile	SCL	306,014	6.2%	Latin America- Caribbean	64
16	Guangzhou, China (People's Republic of)	CAN	1,248,764	5.8%	Asia-Pacific	21
17	Los Angeles CA, USA	LAX	1,780,998	5.0%	North America	14
18	Miami FL, USA	MIA	1,929,889	4.8%	North America	11
19	Doha, Qatar	DOH	844,532	4.5%	Middle East	26
20	Xiamen, China (People's Republic of)	XMN	271,466	4.2%	Asia-Pacific	75

## Top 20 Fastest Growing Airports - 50 to 250 Thousand Tonnes of Cargo

Rank	City, Country	Airport Code	Cargo (Metric Tonnes)	% Change	Region	World Rank
1	Zhengzhou, China (People's Republic of)	CGO	151,194	47.1%	Asia-Pasific	111
2	Zaragoza, Spain	ZAZ	71,152	46.4%	Europe	179
3	WUXI, China (People's Republic of)	WUX	84,027	26.9%	Asia-Pasific	165
4	Dammam, Saudi Arabia (Kingdom of)	DMM	102,826	25.0%	Middle East	144
5	Urumchi, China (People's Republic of)	URC	131,372	22.1%	Asia-Pasific	121
6	Orlando FL, USA	MCO	172,952	18.1%	North America	105
7	Nanning, China (People's Republic of)	NNG	78,134	15.5%	Asia-Pasific	171
8	Guiyang, China (People's Republic of)	KWE	79,587	15.1%	Asia-Pasific	169
9	Addis Ababa, Ethiopia	ADD	153,395	15.1%	Africa	110
10	Entebbe, Uganda	EBB	56,519	15.0%	Africa	197
11	Muscat, Oman	MCT	113,269	14.7%	Middle East	136
12	Spokane WA, USA	GEG	56,252	14.6%	North America	198
13	Mashhad, Iran (Islamic Republic of)	MHD	58,835	14.5%	Middle East	194
14	Caracas, Venezuela	CCS	116,024	14.0%	Latin America- Caribbean	134
15	Port of Spain, Trinidad & Tobago	POS	53,935	13.8%	Latin America- Caribbean	200
16	Beirut, Lebanon	BEY	84,911	13.6%	Middle East	164
17	Helsinki, Finland	HEL	192,158	12.8%	Europe	97
18	Harbin, China (People's Republic of)	HRB	85,948	12.4%	Asia-Pasific	161
19	Fuzhou, China (People's Republic of)	FOC	96,948	10.7%	Asia-Pasific	150
20	Colombo, Sri Lanka	CMB	188,428	10.7%	Asia-Pasific	99

## Preliminary 2013 Top 30 - Total Passengers Traffic

RANK	AIRPORT	PASSENGERS	
		(Enplaning and deplaning)	Percent change
1	ATLANTA GA, US (ATL)	94 431 224	-1.1
2	BEIJING, CN (PEK)	83 712 355	2.2
3	LONDON, GB (LHR)	72 368 061	3.3
4	TOKYO, JP (HND)	68 906 509	3.2
5	CHICAGO IL, US (ORD)	66 777 161	0.2
6	LOS ANGELES CA, US (LAX)	66 667 619	4.7
7	DUBAI, AE (DXB)	66 431 533	15.2
8	PARIS, FR (CDG)	62 052 917	0.7
9	DALLAS/FORT WORTH TX, US (DFW)	60 470 507	3.2
10	JAKARTA, ID (CGK)	60 137 347	4.1
11	HONG KONG, HK (HKG)	59 594 290	6.3
12	FRANKFURT, DE (FRA)	58 036 948	0.9
13	SINGAPORE, SG (SIN)	53 726 087	5.0
14	AMSTERDAM, NL (AMS)	52 569 200	3.0
15	DENVER CO, US (DEN)	52 556 359	-1.1
16	GUANGZHOU, CN (CAN)	52 450 262	8.6
17	BANGKOK, TH (BKK)	51 363 451	-3.1
18	ISTANBUL, TR (IST)	51 172 626	13.6
19	NEW YORK NY, US (JFK)	50 423 765	2.3
20	KUALA LUMPUR, MY (KUL)	47 498 127	19.1
21	SHANGHAI, CN (PVG)	47 189 849	5.2
22	SAN FRANCISCO CA, US (SFO)	44 945 760	1.2
23	CHARLOTTE NC, US (CLT)	43 457 471	5.4
24	INCHEON, KR (ICN)	41 679 758	6.5
25	LAS VEGAS NV, US (LAS)	40 933 037	0.3
26	MIAMI FL, US (MIA)	40 562 948	2.8
27	PHOENIX AZ, US (PHX)	40 341 614	-0.3
28	HOUSTON TX, US (IAH)	39 799 414	-0.2
29	MADRID, ES (MAD)	39 717 850	-12.1
30	MUNICH, DE (MUC)	38 672 644	0.8

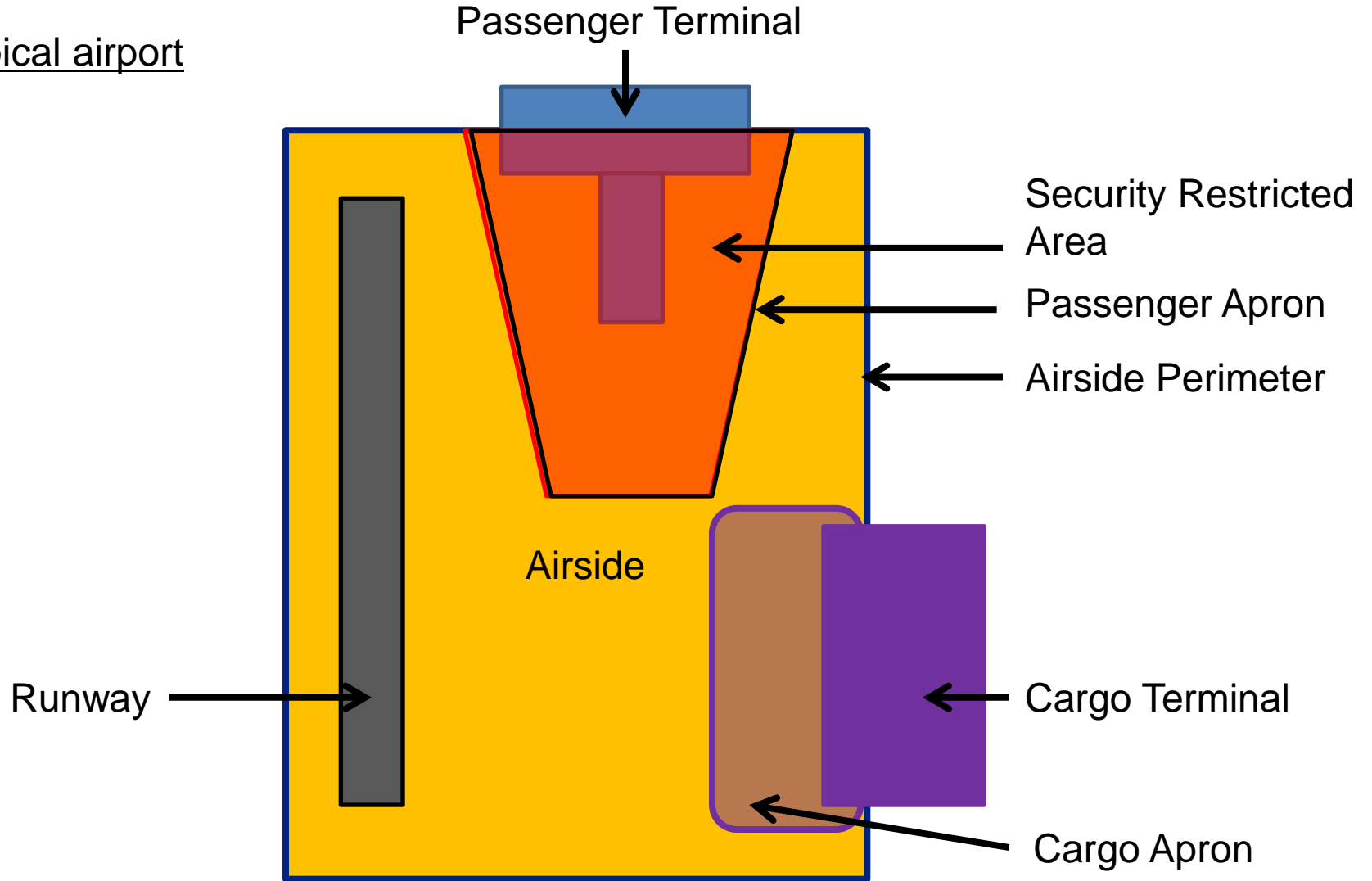
## Preliminary 2013 Top 30 - Total Air Cargo Traffic

RANK	AIRPORT	CARGO (Metric tonnes)	
		Loaded and unloaded	Percent change
1	HONG KONG, HK (HKG)	4 161 718	2.3
2	MEMPHIS TN, US (MEM)	4 137 801	3.0
3	SHANGHAI, CN (PVG)	2 928 527	-0.3
4	INCHEON, KR (ICN)	2 464 384	0.3
5	DUBAI, AE (DXB)	2 435 567	6.8
6	ANCHORAGE AK, US (ANC)	2 421 145	-1.7
7	LOUISVILLE KY, US (SDF)	2 216 079	2.2
8	FRANKFURT, DE (FRA)	2 094 453	1.4
9	PARIS, FR (CDG)	2 069 200	-3.8
10	TOKYO, JP (NRT)	2 019 844	0.7
11	MIAMI FL, US (MIA)	1 945 012	0.8
12	SINGAPORE, SG (SIN)	1 885 978	0.8
13	BEIJING, CN (PEK)	1 843 681	2.4
14	LOS ANGELES CA, US (LAX)	1 747 284	-1.9
15	TAIPEI, TW (TPE)	1 571 814	-0.4
16	AMSTERDAM, NL (AMS)	1 565 961	3.6
17	LONDON, GB (LHR)	1 515 056	-2.6
18	GUANGZHOU, CN (CAN)	1 309 746	4.9
19	NEW YORK NY, US (JFK)	1 295 473	0.8
20	BANGKOK, TH (BKK)	1 236 223	-8.1
21	CHICAGO IL, US (ORD)	1 228 791	-2.0
22	INDIANAPOLIS IN, US (IND)	991 953	6.4
23	TOKYO, JP (HND)	954 446	4.9
24	SHENZHEN, CN (SZX)	913 472	6.9
25	DOHA, QA (DOH)	883 264	4.6
26	LEIPZIG, DE (LEJ)	878 024	3.8
27	COLOGNE, DE (CGN)	717 146	-1.8
28	KUALA LUMPUR, MY (KUL)	713 254	1.6
29	ABU DHABI, AE (AUH)	712 488	24.1
30	OSAKA, JP (KIX)	682 338	-5.6

## Preliminary 2013 Top 30 - Total Aircraft Movements

RANK	AIRPORT	MOVEMENTS	
		Take-off and landings	Percent change
1	ATLANTA GA, US (ATL)	911 074	-2.1
2	CHICAGO IL, US (ORD)	883 287	0.6
3	DALLAS/FORT WORTH TX, US (DFW)	678 059	4.3
4	LOS ANGELES CA, US (LAX)	614 917	1.6
5	DENVER CO, US (DEN)	582 653	-4.9
6	BEIJING, CN (PEK)	567 759	1.9
7	CHARLOTTE NC, US (CLT)	557 948	1.1
8	LAS VEGAS NV, US (LAS)	520 992	-1.3
9	HOUSTON TX, US (IAH)	496 908	-1.2
10	PARIS, FR (CDG)	478 306	-3.9
11	FRANKFURT, DE (FRA)	472 692	-2.0
12	LONDON, GB (LHR)	471 938	-0.7
13	PHOENIX AZ, US (PHX)	459 434	0.3
14	AMSTERDAM, NL (AMS)	440 057	0.5
15	PHILADELPHIA PA, US (PHL)	432 884	-2.3
16	MINNEAPOLIS MN, US (MSP)	431 328	1.4
17	TORONTO ON, CA (YYZ)	431 323	-0.6
18	DETROIT MI, US (DTW)	425 732	-0.5
19	SAN FRANCISCO CA, US (SFO)	421 400	-0.8
20	NEWARK NJ, US (EWR)	413 581	-0.1
21	ISTANBUL, TR (IST)	406 482	11.6
22	NEW YORK NY, US (JFK)	406 419	1.2
23	TOKYO, JP (HND)	403 242	3.1
24	MIAMI FL, US (MIA)	399 140	2.0
25	JAKARTA, ID (CGK)	398 985	4.7
26	MEXICO CITY, MX (MEX)	396 567	5.0
27	GUANGZHOU, CN (CAN)	394 403	5.7
28	HONG KONG, HK (HKG)	382 782	5.7
29	MUNICH, DE (MUC)	381 951	-4.0
30	NEW YORK NY, US (LGA)	374 658	1.3

A typical airport



- **The role of the Airport operator with regard to air cargo**
  - **The airport as a Facilitator:**
    - Provides the facilities (warehouses etc..)?
    - Provides the equipment?
    - Provides IT systems?
    - Provides Staff?
    - Coordination between various airport authorities (Customs, veterinary, aviation security, ...)
    - Other possible cases

- **As an entity involved in Air Cargo Security**
  - Provide and/or maintain facilities used to maintain Air Cargo Security ? (doors, fences, access control systems)
  - Apply Cargo Security Controls including screening
    - Under its own responsibility?
    - On behalf of the aircraft operator?
    - On behalf of the Authority?
    - On behalf of the Freight Forwarders?



The  
voice  
of the  
world's  
airports.

[www.aci.aero](http://www.aci.aero)

## The Economic impact of air cargo industry on Airports

- Impact of the air cargo industry on Airports competitiveness?
- Does air cargo Security and facilitation aspects play a significant role on Airports Competitiveness
- The importance to take into account Security and facilitation aspects when building a new cargo terminal / warehouses (flows of goods etc...)
- Security aspects that can be taken into account when building a new Cargo Terminal (fences, accesses, roads, accesses, landside/airside circulation etc...)
- Positive impact if we take into account cargo Security and facilitation when building a new cargo terminal
- Facilitation aspects that can be taken into account when designing new IT systems