



**Asia-Pacific  
Economic Cooperation**

---

**2009/SCCP/SWWG/WKSP4/009**

## **Automated Commercial Environment (ACE)/ International Trade Data System (ITDS)**

Submitted by: United States



**Single Window Working Group Capacity  
Building Workshop 4  
Singapore  
6-8 April 2009**



U.S. Customs and  
Border Protection

## Automated Commercial Environment (ACE)/ International Trade Data System (ITDS)

Presented to the  
**Asia-Pacific Economic Cooperation (APEC)  
Sub-Committee on Customs Procedures (SCCP)**  
April 1-8, 2009

Jeff Nii, CBP Attaché  
U.S. Embassy - Singapore



U.S. Customs and  
Border Protection



### CBP Operational Workload

#### On a typical day, CBP officers...

##### ▶ Process:

- 1.09 million passengers and pedestrians
- 70,451 truck, rail, and sea containers
- 331,347 privately owned vehicles

##### ▶ Make:

- 2,796 apprehensions at and in between ports of entry for illegal entry
- 73 arrests of criminals at ports of entry
- 614 refusals of entry at U.S. ports of entry

##### ▶ Seize:

- 7,621 pounds of narcotics
- 4,125 prohibited meat, plant materials or animal products
- \$295,829 in undeclared or illicit currency

##### ▶ Secure:

5,000 mile border with Canada

327 Ports of Entry  
144 Border Patrol Stations  
20 Sectors  
35 Permanent Check Points

1,900 mile  
border with  
Mexico

95,000 miles  
of shoreline

## How Does CBP Currently Process this Workload?

- ▶ **Automated Commercial System (ACS)**
  - 25+ year old system increasingly taxed by growing volume of trade
- ▶ **Manual, paper-based processes**
- ▶ **Reliance on multiple systems**
  - Automated Targeting System (ATS)
  - Free and Secure Trade (FAST)
  - Traveler Enforcement Compliance System/National Crime Information Center (TECS/NCIS)
  - ACS and its subordinate systems

## What is ACE/ITDS?

**Since 9/11, CBP has been addressing terrorist threats 24 hours a day by using various strategies and employing the latest in technology.**

**CBP has extended the zone of security beyond our physical borders through the use of bilateral and private sector partnerships, targeting and scrutinizing advanced information on people and products coming into the United States.**

- ▶ Modernizes commercial trade processing systems with features designed to consolidate and automate border processing to include other federal agencies with a border presence
- ▶ Provides a single centralized online access point to connect CBP, Participating Government Agencies (PGAs), and the trade
- ▶ Supports CBP border security and trade facilitation mission
- ▶ Forms backbone of CBP trade processing and risk assessment capability with the Automated Targeting System
- ▶ Interfaces with and consolidates information from the following systems via the ACE Secure Data Portal:
  - ATS
  - TECS/NCIS
  - FAST
  - ACS
- ▶ Facilitates collection and distribution of standard electronic import and export data required by all Federal agencies via International Trade Data System (ITDS) initiative

\*H.R. 4954 – Security and Accountability for Every Port (SAFE Port) Act

## International Trade Data System (ITDS) Initiative



► **Vision:**

- **Single window filing:** A single place for the trade community to submit data required by all Federal agencies for the clearance of cargo
- **Inter-agency data sharing:** Dissemination of international trade and transportation data to all federal agencies involved in import, export, and transportation-related decision making

► **Support:**

- **The Security and Accountability for Every Port Act of 2006** officially established the ITDS initiative under the Department of the Treasury and mandated agencies involved in licensing and admissibility to join ITDS
- **Office of Management and Budget Directive M-07-23** mandated that agencies appoint senior executives to an interagency ITDS coordination team
- **President's Management Agenda, E-Government Scorecard** mandated integration of agency operations and IT investments

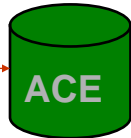
► **Status:**

- **46 Participating Government Agencies including:**
  - Consumer Product Safety Commission (CSPC)
  - Animal and Plant Health Inspection Service (APHIS)
  - Federal Motor Carrier Safety Administration (FMCSA)
  - U.S. Coast Guard (USCG)
- **More than 500 ACE end users:** Representing 27 PGAs

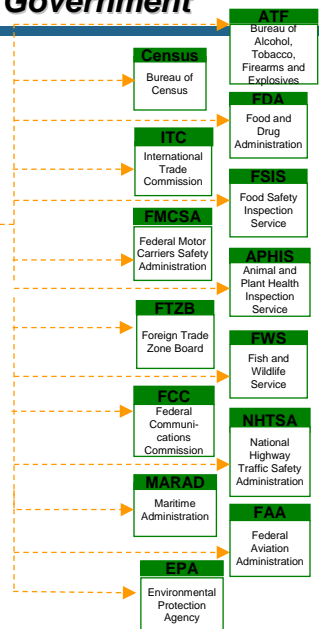


## Single Window to the Government

**TRADE:**  
Importers,  
Brokers,  
Carriers, and  
Exporters



ACE is working to integrate information requirements for all federal agencies engaged in the import/export process. Through the ITDS process the mission needs of these Government agencies will be identified and merged with the implementation of ACE.



## Improves Import Process



- ▶ Between FY 2005 and FY 2006, ACE allowed FSIS to increase the amount of ineligible product detected, detained, and removed from commerce nearly 30 fold from 97,000 to 2.87 million pounds

- ▶ FSIS controlled 2.04 million pounds of ineligible product in FY 2007 and 3.00 million pounds of ineligible product in the first eight months of FY 2008



Data Source: FSIS Import Tracking System

7

## ACE and Compliance



### ▶ 1993 Customs and Modernization Act (Mod Act)

- Legal foundation for the CBP Modernization effort; promotes the concept of “shared responsibility”
- Outlined requirements for automation and emphasized electronic trade processing
- ACE capabilities will fulfill the Mod Act by enabling trade community users and CBP officers to electronically submit and retrieve import transaction data through an intuitive, standards-based, secure Web portal

### ▶ Trade Act of 2002

- Requires the submission of advance electronic cargo information
- On February 11, 2008, CBP Implemented mandatory electronic truck manifest (e-Manifest) filing at remaining land border ports, marking the implementation of mandatory e-Manifest filing at all 99 U.S. land border ports of entry
- E-manifests represent 99 percent of manifests filed

8

## Current ACE Capabilities

Foundational Enablers	<b>Anti-terrorism</b>		<b>Truck Manifest</b>		<b>Trade Facilitation</b>	
	<ul style="list-style-type: none"> <li>• Targets new information</li> <li>• Enhances interaction with driver</li> <li>• Allows greater attention to surroundings</li> </ul>				<ul style="list-style-type: none"> <li>• Automates manifests</li> <li>• Enables quicker processing</li> <li>• Fosters efficiency in the primary booth</li> <li>• Compresses time-to-market, trade savings</li> </ul>	
	<b>Periodic Payment</b>					
	<ul style="list-style-type: none"> <li>• Leverages resource savings</li> <li>• Provides more personnel focused on anti-terrorism</li> </ul>			<ul style="list-style-type: none"> <li>• Provides monthly duty and fee collections</li> <li>• Facilitates less labor- and paper-intensive processing</li> <li>• Requires fewer CBP personnel</li> <li>• Provides savings for government and trade</li> </ul>		
<b>ACE Secure Data Portal</b>						
<ul style="list-style-type: none"> <li>• Provides national account view</li> <li>• Provides links information on all entities</li> <li>• Provides carrier/driver/crew /shipment data</li> <li>• Provides vehicle information</li> <li>• Provides border crossing history</li> <li>• Provides enforcement alerts</li> </ul>			<ul style="list-style-type: none"> <li>• Provides more information, more timely</li> <li>• Expands PGA involvement</li> <li>• Provides account structure</li> <li>• Allows Management continuous bonds</li> <li>• Provides more efficient/effective back end review</li> <li>• Provides trade access to national account view</li> </ul>			
<b>Screening &amp; Targeting</b>						
<ul style="list-style-type: none"> <li>• Uses business rules-based engine</li> <li>• Allows end-users to define and maintain rules</li> <li>• Access external intelligence data sources</li> <li>• Integrates findings into targeting assessment process</li> </ul>			<ul style="list-style-type: none"> <li>• Reduces referrals to secondary through focused targeting</li> <li>• Enables quicker processing</li> <li>• Fosters efficiency in the primary booth</li> <li>• Compresses time-to-market, providing trade savings</li> </ul>			

## What ACE Means for the Trade Community

- ▶ Allows trade participants to better manage their information
- ▶ Expedites legitimate trade by providing CBP with tools to efficiently process imports/exports and move goods quickly across the border
- ▶ Facilitates efficient collection, processing, and analysis of commercial import and export data
- ▶ Improves communication, collaboration, and compliance efforts between CBP and the trade community
- ▶ Provides significant cash flow advantages by allowing the payment of duties and fees on a monthly basis
- ▶ Allows access to transactional, financial, and compliance data
- ▶ Reduces redundant and time consuming paper processes
- ▶ Provides an information-sharing platform for trade data throughout the Government via the ITDS initiative

## Upcoming Capabilities

Rail and Sea Manifest (M1)	Initial Entry Summary Types (A2.2)
<i>Incorporates rail and sea manifest processing into ACE</i>	<i>Allows entry summary processing for the most common entry types in ACE</i>
Deployment	
<ul style="list-style-type: none"> <li>• April/June 2009</li> </ul>	<ul style="list-style-type: none"> <li>• May/June – August/October 2009</li> </ul>
Features	
<ul style="list-style-type: none"> <li>• Ability to place or remove holds at container level</li> <li>• Broker download capability for rail and sea carriers</li> <li>• Automated validation of bonded carrier identification</li> <li>• Consolidated view of rail and sea shipment manifest and entry data at bill of lading or container level</li> </ul>	<ul style="list-style-type: none"> <li>• Entry summary processing in ACE for entry types 01 and 11</li> <li>• Ability to receive and respond to CBP Forms 28, 29, and 4647 via ACE portal or ACE entry summary</li> <li>• Trade responses to electronic forms can be linked to entry summaries for nationwide visibility</li> <li>• Automated Census Warning Overrides</li> </ul>
Benefits	
<ul style="list-style-type: none"> <li>• Improved cargo security, expedited cargo processing, and trade facilitation through a consolidated view of data</li> <li>• Faster, easier access to data through integrated entry, manifest, and risk assessment information for rail and sea cargo</li> <li>• Retires AMS rail and sea processing</li> </ul>	<ul style="list-style-type: none"> <li>• National visibility of forms, rejects, team review, and other actions</li> <li>• Reduced paper processing via ability to electronically track, issue, and receive response of CBP Forms 28, 29, &amp; 4647</li> <li>• Increased functional integration supports drill down throughout ACE to entry summaries, validation activities, and account data</li> <li>• Preliminary step toward migrating from ACS</li> </ul>

## Questions?

### ► For more information:

- Visit the ACE Web site at [www.cbp.gov/modernization](http://www.cbp.gov/modernization), or
- send an e-mail to [CBP.cbpcspo@dhs.gov](mailto:CBP.cbpcspo@dhs.gov)



# U.S. Customs and Border Protection



**Back up slides**







## Participating Government Agencies (PGAs)

	Agency/Acronym	Department or Independent Agency
1	AMS, Agricultural Marketing Service	Agriculture
2	APHIS, Animal and Plant Health Inspection Service	Agriculture
3	A/LM, State Dispatch Office, Office of Logistics and Management	State
4	ATF, Bureau of Alcohol, Tobacco, Firearms, and Explosives	Justice
5	BIS, Bureau of Industry and Security	Commerce
6	BLS, Bureau of Labor Statistics	Labor
7	BTS, Bureau of Transportation Statistics	Transportation
8	CBP, Customs and Border Protection	Homeland Security
9	CDC, Centers for Disease Control and Prevention	Health and Human Services
10	Census, Bureau of the Census	Commerce
11	CPSC, Consumer Product Safety Commission	Independent Agency
12	DEA, Drug Enforcement Administration	Justice
13	DCMA, Defense Contracts Management Agency	Defense
14	EIA, Energy Information Administration	Energy
15	EPA, Environmental Protection Agency	Independent Agency
16	FAA, Federal Aviation Administration	Transportation
17	FAS, Foreign Agricultural Service	Agriculture
18	FCC, Federal Communications Commission	Independent Agency
19	FDA, Food and Drug Administration	Health and Human Services
20	FHWA, Federal Highway Administration	Transportation
21	FinCEN, Financial Crimes Enforcement Network	Treasury
22	FMC, Federal Maritime Commission	Independent Agency
23	FMCSA, Federal Motor Carrier Safety Administration	Transportation

15



## PGAs, continued

	Agency/Acronym	Department or Independent Agency
24	FSIS, Food Safety and Inspection Service	Agriculture
25	FTZB, Foreign Trade Zones Board	Commerce
26	FWS, U.S. Fish and Wildlife Service	Interior
27	GIPSA, Grain Inspection, Packers, and Stockyards Administration	Agriculture
28	IRS, Internal Revenue Service	Treasury
29	IA, Import Administration	Commerce
30	ITC, International Trade Commission	Independent Agency
31	MARAD, Maritime Administration	Transportation
32	NHTSA, National Highway Traffic Safety Administration	Transportation
33	NMFS, National Marine Fisheries Service	Commerce
34	NRC, U.S. Nuclear Regulatory Commission	Independent Agency
35	OES, Bureau of Oceans and International Environmental and Scientific Affairs	State
36	OFAC, Office of Foreign Assets Control	Treasury
37	OFE, Office of Fossil Energy	Energy
38	OFM, Office of Foreign Missions	State
39	PHMSA, Pipeline and Hazardous Materials Safety Administration	Transportation
40	DDTC, Directorate of Defense Trade Controls	State
41	TSA, Transportation Security Administration	Homeland Security
42	TTB, Alcohol and Tobacco Tax and Trade Bureau	Treasury
43	USACE, U.S. Army Corps of Engineers	Defense
44	USAID, U.S. Agency for International Development	Independent Agency
45	USCG, U.S. Coast Guard	Homeland Security
46	USTR, U.S. Trade Representative	Independent Agency

16

- ▶ The ACE Secure Data Portal account application can be found at [www.cbp.gov/modernization](http://www.cbp.gov/modernization) or by sending an e-mail to [ACENow@dhs.gov](mailto:ACENow@dhs.gov)
- ▶ Applications can be submitted to CBP via regular mail or e-mail
- ▶ Applicants are responsible for reading the Terms and Conditions of portal access as published in the May 16, 2007, Federal Register Notice (72 FR 27632)
- ▶ Logging into the ACE Secure Data Portal constitutes the account's acceptance of the Terms and Conditions of portal access as set forth in the Federal Register Notice

- ▶ **Step 1: Fill out the ACE application**
  - Fill out all required application fields on your computer
- ▶ **Step 2: Return the ACE application to CBP**
  - Print out the completed application, sign, and mail to:  
  
*ACE Secure Data Portal – ACE Applications  
U.S. Customs and Border Protection  
Beauregard Building, Room A-314-3  
7681 Boston Boulevard  
Springfield, VA 22153*
  - OR**
  - Complete the application, indicate your digital signatures, and e-mail the completed electronic application to:
    - [ACE.Applications@dhs.gov](mailto:ACE.Applications@dhs.gov)