



FACILITATIONS & SIMPLIFICATIONS IN EXPRESS CARGO



REPUBLIC OF TÜRKİYE
DIRECTORATE GENERAL OF CUSTOMS



Overview

- Simplified Customs Declaration (SCD)
 - Import & Export Work Flows
 - Specifications
 - Challenges
 - Ongoing Projects
-



SIMPLIFIED CUSTOMS DECLARATION (SCD)



Super Reduced Data Set

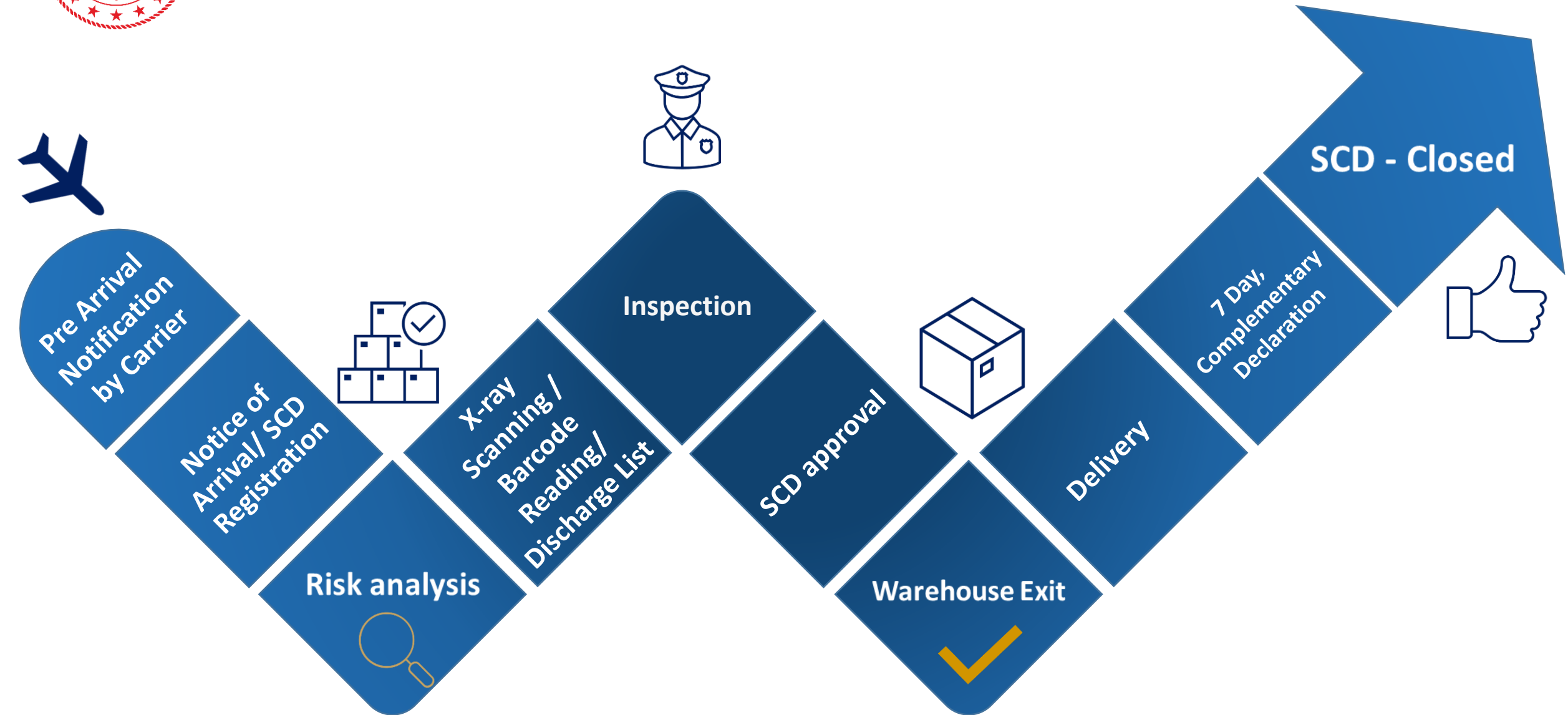
Import and Export

**Authorised Express Cargo &
Postal Operator**

**Air (2013) & Land (2020)
Transportation**

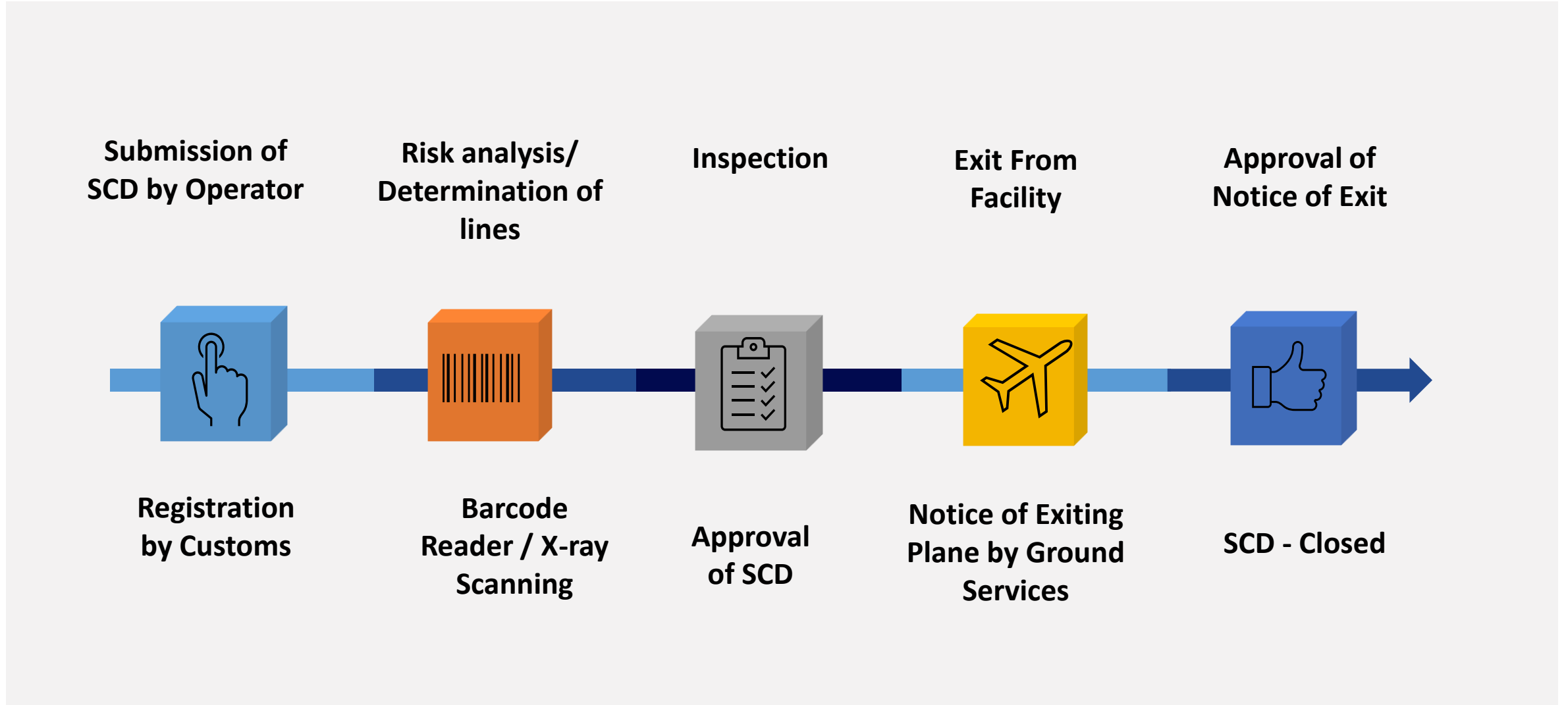


IMPORT WORK FLOW





EXPORT WORK FLOW





SPECIFICATIONS

0-150 Euro, 30 kg. (B2C, non commercial)

I
M
P
O
R
T

- Fix Rate Duty (18% for goods from the EU, 30% for goods from elsewhere)
- 20% Special Consumption Tax for specific goods

Consignee and Indirect Representative (Express Carrier or Postal Authority) joint liability

Tax to the Customs Administration upon collection within 7 day period.

0-15000 Euro, 300 kg. (Commercial or non Commercial)

- Value Added Tax return
- Less procedure
- Lower costs

Consigner and Indirect Representative (Express Carrier or Postal Authority) joint liability

E
X
P
O
R
T

SIMPLIFIED DECLARATION WITH SCD



Standardisation

Awareness

Competition

Challenges

Exponential
Growth

Facilitation

DATA

Digitalisation

Simplification



ONGOING PROJECTS



Integrated Export



Access to
E-Commerce





INTEGRATED EXPORT

E-Invoice

EXPORT SCD

System integrations with SCD

Data flow directly from exporter

Shorter procedure time

Faster delivery

E-Dispatch
Note



ACCESS TO E-COMMERCE

Declarant Guide
Exporter Guide
Officer Guide

Guidelines



Webinars
Summits
Workshops

Activities



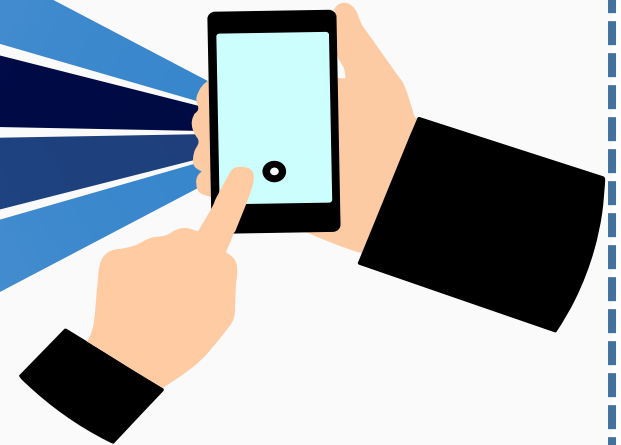
ticaret.gov.tr
gumrukrehberi.gov.tr
kolayhracat.gov.tr

Web Portals



Social Media
Mobile APP
Call Center

Digital Tools





Thank You

Deniz Okan SAVAŞ
Head of Department
Directorate General of Customs
Ministry of Trade
D.Savas@ticaret.gov.tr
+903124493065

Hasan ÖDEK
Trade Expert
Directorate General of Customs
Ministry of Trade
H.Odek@ticaret.gov.tr
+903124493136

Department of Exemptions
gmmuafiyetler@ticaret.gov.tr